

## Doublecortin (K292) polyclonal antibody

Catalog: BS1635

Host: Rabbit

Reactivity: Human, Mouse, Rat

### BackGround:

The DCDC2 gene encodes the DCDC2 protein (Doublecortin-containing protein 2, RU2, RU2S) which contains two Doublecortin peptide domains similar to those in the Doublecortin gene. DCDC2 is transcribed as a “normal” gene, which results in a sense transcript (RU2S), but when it is transcribed in the opposite direction, a shorter antisense transcript (RU2AS), which is found in tumors, results. The DCDC2 protein demonstrates ubiquitous expression, whereas RU2AS expression is restricted to normal kidney, bladder, liver, testis and tumors of various histologic origins. The deduced DCDC2 protein contains 476 amino acids, while the RU2AS protein contains 84 residues. There is a significant association between dyslexia and several SNPs within the DCDC2 gene.

### Product:

Rabbit IgG, 1mg/ml in PBS with 0.02% sodium azide, 50% glycerol, pH7.2

### Molecular Weight:

~ 45 kDa

### Swiss-Prot:

O43602

### Purification&Purity:

The antibody was affinity-purified from rabbit antiserum by affinity-chromatography using epitope-specific im-

munogen and the purity is > 95% (by SDS-PAGE).

### Applications:

IHC: 1:50~1:200

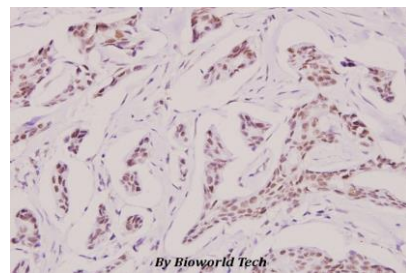
### Storage&Stability:

Store at 4 °C short term. Aliquot and store at -20 °C long term. Avoid freeze-thaw cycles.

### Specificity:

Doublecortin (K292) polyclonal antibody detects endogenous levels of Doublecortin protein.

### DATA:



Immunohistochemistry (IHC) analyzes of Doublecortin (K292) pAb in paraffin-embedded human breast carcinoma tissue at 1:100.

### Note:

For research use only, not for use in diagnostic procedure.

### Bioworld Technology, Inc.

Add: 1660 South Highway 100, Suite 500 St. Louis Park, MN 55416, USA.

Email: [info@bioworld.com](mailto:info@bioworld.com)

Tel: 6123263284

Fax: 6122933841

### Bioworld technology, co. Ltd.

Add: No 9, weidi road Qixia District Nanjing, 210046, P. R. China.

Email: [info@biogot.com](mailto:info@biogot.com)

Tel: 0086-025-68037686

Fax: 0086-025-68035151