

Raf-1 (Q39) polyclonal antibody

Catalog: BS1622

Host: Rabbit

Reactivity: Human, Mouse, Rat

Background:

Several serine/threonine protein kinases have been implicated as intermediates in signal transduction pathways. These include ERK/MAP kinases, ribosomal S6 kinase (Rsk) and Raf-1. Raf-1 is a cytoplasmic protein with intrinsic serine/threonine activity. It is broadly expressed in nearly all cell lines tested to date and is the cellular homolog of v-Raf, the product of the transforming gene of the 3611 strain of murine sarcoma virus. The unregulated kinase activity of the v-Raf protein has been associated with transformation and mitogenesis, while the activity of Raf-1 is normally suppressed by a regulatory N-terminal domain. Raf-A, a second member of the Raf gene family of serine/threonine protein kinases, exhibits substantial homology to Raf-1 within the kinase domain of the two molecules, but less homology elsewhere. Expression of Raf-B is highly restricted, with highest levels in the cerebrum and testis.

Product:

Rabbit IgG, 1mg/ml in PBS with 0.02% sodium azide, 50% glycerol, pH7.2

Molecular Weight:

~ 73 kDa

Swiss-Prot:

P04049

Purification&Purity:

The antibody was affinity-purified from rabbit antiserum by affinity-chromatography using epitope-specific immunogen and the purity is > 95% (by SDS-PAGE).

Applications:

WB: 1:500~1:1000

IHC: 1:50~1:200

Storage&Stability:

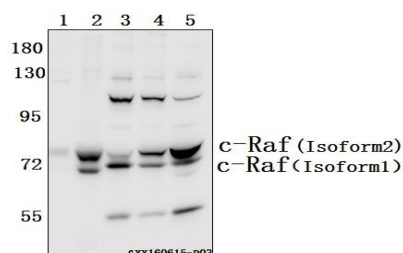
Store at 4 °C short term. Aliquot and store at -20 °C long

term. Avoid freeze-thaw cycles.

Specificity:

Raf-1 (Q39) polyclonal antibody detects endogenous levels of Raf-1 protein.

DATA:



Western blot (WB) analysis of c-Raf /Raf-1 (Q39) polyclonal antibody at 1:500 dilution

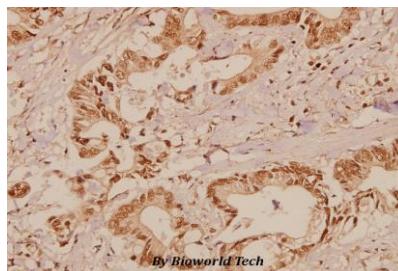
Lane1:The Muscle tissue lysate of Mouse(40ug)

Lane2:H9C2 whole cell lysate(40ug)

Lane3:SGC7901 whole cell lysate(40ug)

Lane4:A549 whole cell lysate(40ug)

Lane5:786-O whole cell lysate(40ug)



Immunohistochemistry (IHC) analyzes of Raf-1 (Q39) pAb in paraffin-embedded human colorectal carcinoma tissue at 1:50.

Note:

For research use only, not for use in diagnostic procedure.

Bioworld Technology, Inc.

Add: 1660 South Highway 100, Suite 500 St. Louis Park, MN 55416, USA.

Email: info@bioworld.com

Tel: 6123263284

Fax: 6122933841

Bioworld technology, co. Ltd.

Add: No 9, weidi road Qixia District Nanjing, 210046, P. R. China.

Email: info@biogot.com

Tel: 0086-025-68037686

Fax: 0086-025-68035151