

## PKC $\zeta$ (P556) polyclonal antibody

Catalog: BS1579

Host: Rabbit

Reactivity: Human, Mouse, Rat

### Background:

Members of the protein kinase C (PKC) family play a key regulatory role in a variety of cellular functions including cell growth and differentiation, gene expression, hormone secretion and membrane function. PKCs were originally identified as serine/threonine protein kinases whose activity was dependent on calcium and phospholipids. Diacylglycerols (DAG) and tumor promoting phorbol esters bind to and activate PKC. PKCs can be subdivided into at least two major classes including conventional (c) PKC isoforms ( $\alpha$ ,  $\beta$ I,  $\beta$ II and  $\gamma$ ) and novel (n) PKC isoforms ( $\delta$ ,  $\epsilon$ ,  $\zeta$ ,  $\eta$  and  $\theta$ ). Patterns of expression for each PKC isoform differs among tissues and PKC family members exhibit clear differences in their cofactor dependencies. For instance, the kinase activities of nPKC  $\delta$  and  $\epsilon$  are independent of  $Ca^{++}$ . On the other hand, nPKC  $\delta$  and  $\epsilon$ , as well as all of the cPKC members, possess phorbol ester-binding activities and kinase activities

### Product:

Rabbit IgG, 1mg/ml in PBS with 0.02% sodium azide, 50% glycerol, pH7.2

### Molecular Weight:

~ 72 kDa

### Swiss-Prot:

Q05513

### Purification&Purity:

The antibody was affinity-purified from rabbit antiserum by affinity-chromatography using epitope-specific immunogen and the purity is > 95% (by SDS-PAGE).

### Applications:

WB: 1:500~1:1000

IHC/IF: 1:50~1:200

IP: 1:50~1:200

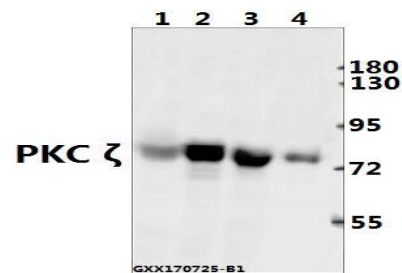
### Storage&Stability:

Store at 4 °C short term. Aliquot and store at -20 °C long term. Avoid freeze-thaw cycles.

### Specificity:

PKC  $\zeta$  (P556) polyclonal antibody detects endogenous levels of PKC  $\zeta$  protein.

### DATA:



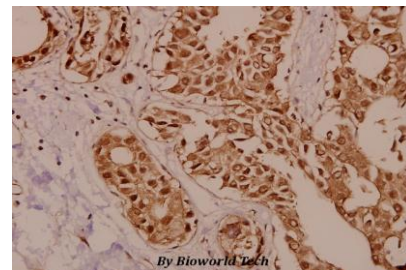
Western blot (WB) analysis of PKC  $\zeta$  (P556) polyclonal antibody at 1:2000 dilution

Lane1:The Testis tissue lysate of Mouse(40ug)

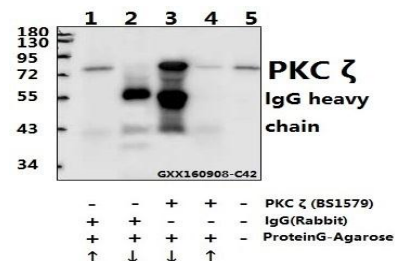
Lane2:PC12 cell lysate

Lane3:A549 cell lysate

Lane4:U-87MG cell lysate



Immunohistochemistry (IHC) analyzes of PKC  $\zeta$  (P556) pAb in paraffin-embedded human breast carcinoma tissue at 1:50.



Immunoprecipitation of the Lung tissue lysate of Mouse using PKC  $\zeta$  (P556) pAb (Sepharose Bead Conjugate)#BD0048 (lane 2 and lane 3) and Nonspecific IgG Control (Sepharose Bead Conjugate)#BD0048

### Bioworld Technology, Inc.

Add: 1660 South Highway 100, Suite 500 St. Louis Park, MN 55416, USA.

Email: [info@bioworld.com](mailto:info@bioworld.com)

Tel: 6123263284

Fax: 6122933841

### Bioworld technology, co. Ltd.

Add: No 9, weidi road Qixia District Nanjing, 210046, P. R. China.

Email: [info@biogot.com](mailto:info@biogot.com)

Tel: 0086-025-68037686

Fax: 0086-025-68035151



## PRODUCT DATA SHEET

Bioworld Technology, Inc.

(lane 4 and lane 5). Lane 1 is 30% input. The western blot was probed using PKC  $\zeta$  (P556) pAb #BS1579. “↑” (supernatant); “↓” (deposition)

**Note:**

For research use only, not for use in diagnostic procedure.

---

**Bioworld Technology, Inc.**

Add: 1660 South Highway 100, Suite 500 St. Louis Park,  
MN 55416, USA.

Email: [info@bioworld.com](mailto:info@bioworld.com)

Tel: 6123263284

Fax: 6122933841

**Bioworld technology, co. Ltd.**

Add: No 9, weidi road Qixia District Nanjing, 210046,  
P. R. China.

Email: [info@biogot.com](mailto:info@biogot.com)

Tel: 0086-025-68037686

Fax: 0086-025-68035151