

c-Myb (R6) polyclonal antibody

Catalog: BS1556

Host: Rabbit

Reactivity: Human, Mouse, Rat

BackGround:

c-Myb is the cellular homolog of the leukemogenic avian retroviral protein v-Myc. c-Myb is expressed predominantly in immature and rapidly dividing hematopoietic cells, and cellular levels of c-Myb substantially decreases as cells reach terminal differentiation. B-Myb is expressed in a wide variety of proliferating cells, with levels accumulating during the G1 to S phase transition. A-Myb is expressed at specific times in reproductive tissues, some neural cells, and a subset of normal and neoplastic B lymphocytes.

Product:

Rabbit IgG, 1mg/ml in PBS with 0.02% sodium azide, 50% glycerol, pH7.2

Molecular Weight:

~ 72 kDa

Swiss-Prot:

P10242

Purification&Purity:

The antibody was affinity-purified from rabbit antiserum by affinity-chromatography using epitope-specific immunogen and the purity is > 95% (by SDS-PAGE).

Applications:

IHC: 1:50~1:200

IF: 1:50~1:200

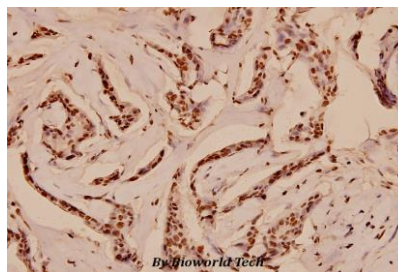
Storage&Stability:

Store at 4 °C short term. Aliquot and store at -20 °C long term. Avoid freeze-thaw cycles.

Specificity:

c-Myb (R6) polyclonal antibody detects endogenous levels of c-Myb protein.

DATA:



Immunohistochemistry (IHC) analyzes of c-Myb (R6) pAb in paraffin-embedded human breast carcinoma tissue at 1:100.

Note:

For research use only, not for use in diagnostic procedure.

Bioworld Technology, Inc.

Add: 1660 South Highway 100, Suite 500 St. Louis Park, MN 55416, USA.

Email: info@bioworld.com

Tel: 6123263284

Fax: 6122933841

Bioworld technology, co. Ltd.

Add: No 9, weidi road Qixia District Nanjing, 210046, P. R. China.

Email: info@biogot.com

Tel: 0086-025-68037686

Fax: 0086-025-68035151