

## Bcr (S356) polyclonal antibody

Catalog: BS1513

Host: Rabbit

Reactivity: Human, Mouse, Rat

### Background:

The Bcr gene, mapping on chromosome 22, was initially identified on the basis of its fusion with the c-Abl proto-oncogene on chromosome 9 resulting in the generation of the Philadelphia chromosome in 90-95% of patients with chronic myelogenous leukemia (CML). The Bcr gene encodes for the Breakpoint cluster region protein (Bcr). A consequence of this translocation is the generation of a Bcr/c-Abl mRNA encoding an activated c-Abl protein kinase. The Bcr gene has been shown to encode a 160 kDa GTPase-activating protein (GAP) specific for the Ras-related GTP-binding protein, Rac 1 p21. While it has been speculated that the Bcr protein may also stimulate Rac 2 p21 GTPase activity, it has no effect on Ras p21 or Rho p21 GTPases.

### Product:

Rabbit IgG, 1mg/ml in PBS with 0.02% sodium azide, 50% glycerol, pH7.2

### Molecular Weight:

~ 160 kDa

### Swiss-Prot:

P11274

### Purification&Purity:

The antibody was affinity-purified from rabbit antiserum by affinity-chromatography using epitope-specific im-

munogen and the purity is > 95% (by SDS-PAGE).

### Applications:

IHC: 1:50~1:200

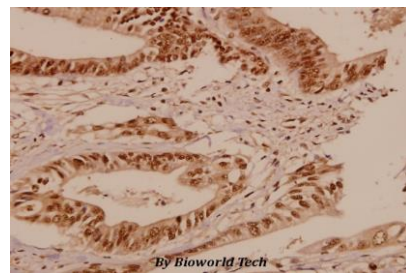
### Storage&Stability:

Store at 4 °C short term. Aliquot and store at -20 °C long term. Avoid freeze-thaw cycles.

### Specificity:

Bcr (S356) polyclonal antibody detects endogenous levels of Bcr protein.

### DATA:



Immunohistochemistry (IHC) analyzes of Bcr (S356) pAb in paraffin-embedded human colorectal carcinoma tissue at 1:50.

### Note:

For research use only, not for use in diagnostic procedure.

### Bioworld Technology, Inc.

Add: 1660 South Highway 100, Suite 500 St. Louis Park, MN 55416, USA.

Email: [info@bioworld.com](mailto:info@bioworld.com)

Tel: 6123263284

Fax: 6122933841

### Bioworld technology, co. Ltd.

Add: No 9, weidi road Qixia District Nanjing, 210046, P. R. China.

Email: [info@biogot.com](mailto:info@biogot.com)

Tel: 0086-025-68037686

Fax: 0086-025-68035151