

Tubulin γ (F414) polyclonal antibody

Catalog: BS1483

Host: Rabbit

Reactivity: Human, Mouse, Rat

Background:

TUB4, the gene for *Saccharomyces cerevisiae* γ -Tubulin, encodes a 473 amino acid structural protein that localizes to the spindle pole body. γ Tubulin, an essential protein for cell growth, organizes microtubule arrays in the nucleus and cytoplasm. γ Tubulin-depleted cells fail to form functional spindles and arrest during nuclear division. γ Tubulin associates with spindle body components Spc97 and Spc98 to form the γ Tubulin complex. The budding yeast γ Tubulin complex contains one molecule each of Spc97 and Spc98 and two molecules of γ Tubulin. In the SPB, Spc110 binds Spc97 and Spc98 of the γ Tubulin complex. 2D gel analysis indicates five isoforms of γ Tubulin. The phosphorylation of γ Tubulin at Tyr 445 plays a regulatory role in microtubule formation. The incidence rate for this phosphorylation event peaks during G1.

Product:

Rabbit IgG, 1mg/ml in PBS with 0.02% sodium azide, 50% glycerol, pH7.2

Molecular Weight:

~ 51 kDa

Swiss-Prot:

P23258

Purification&Purity:

The antibody was affinity-purified from rabbit antiserum

by affinity-chromatography using epitope-specific immunogen and the purity is > 95% (by SDS-PAGE).

Applications:

IHC: 1:50~1:200

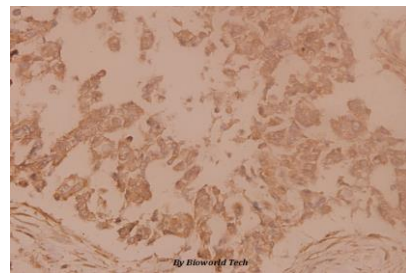
Storage&Stability:

Store at 4 °C short term. Aliquot and store at -20 °C long term. Avoid freeze-thaw cycles.

Specificity:

Tubulin γ (F414) polyclonal antibody detects endogenous levels of Tubulin γ protein.

DATA:



Immunohistochemistry (IHC) analyzes of Tubulin γ (F414) pAb in paraffin-embedded human breast carcinoma tissue at 1:100.

Note:

For research use only, not for use in diagnostic procedure.

Bioworld Technology, Inc.

Add: 1660 South Highway 100, Suite 500 St. Louis Park, MN 55416, USA.

Email: info@bioworld.com

Tel: 6123263284

Fax: 6122933841

Bioworld technology, co. Ltd.

Add: No 9, weidi road Qixia District Nanjing, 210046, P. R. China.

Email: info@biogot.com

Tel: 0086-025-68037686

Fax: 0086-025-68035151