

## Tubulin $\beta$ (4D9) monoclonal antibody

Catalog: BS1482M      Host: Mouse      Reactivity: Human, Mouse, Rabbit, Frog, Fish, Rat (not applicable to some rat tissue)

### BackGround:

Microtubules are constituent parts of the mitotic apparatus, cilia, flagella, and elements of the cytoskeleton. They consist principally of 2 soluble proteins, alpha- and beta-tubulin, each of about 55,000 Da.

Antibodies against beta Tubulin are useful as loading controls for Western Blotting. However it should be noted that levels of beta Tubulin may not be stable in certain cells.

### Product:

1mg/ml in PBS with 0.02% sodium azide, 50% glycerol, pH7.2

### Molecular Weight:

~ 55 kDa

### Swiss-Prot:

Q13509/P04350/P68371/P07437/Q13885/Q9BUF5

### Purification&Purity:

The antibody was affinity-purified from mouse ascites by affinity-chromatography using epitope-specific immunogen and the purity is > 95% (by SDS-PAGE).

### Applications:

WB: 1:5000~20000

IHC: 1:100~500

IF: 1:100~500

IP: 1:100~500

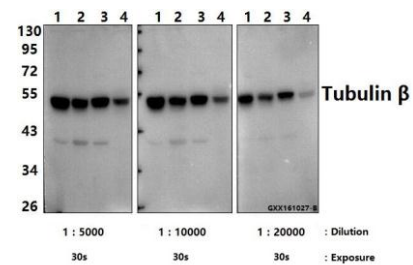
### Storage&Stability:

Store at 4 °C short term. Aliquot and store at -20 °C long term. Avoid freeze-thaw cycles.

### Specificity:

Tubulin  $\beta$  (4D9) mAb detects endogenous levels of  $\beta$ -Tubulin protein.

### DATA:



Western blot (WB) analysis of Tubulin  $\beta$  (4D9) mAb at

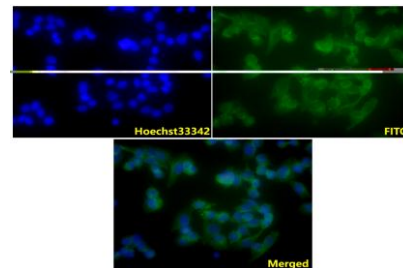
1:5000/1:10000/1:20000 dilution

Lane1:L02 whole cell lysate(20ug)

Lane2:NIH-3T3 whole cell lysate(20ug)

Lane3:PC12 whole cell lysate(20ug)

Lane4:The Kidney tissue lysate of Mouse(20ug)



IF image of BS1482M stained A375 cells. The cells were 4% para-formaldehyde fixed (20 min) and then incubated in 10% normal goat serum for 1h to permeabilise the cells and block non-specific protein-protein interactions. The cells were then incubated with the antibody Tubulin  $\beta$  (4D9) mAb #BS1482M(1:500) at 10 $\mu$ g/ml overnight at +4 °C. The secondary antibody (Green) was Goat Anti-Mouse IgG (H+L) FITC#BS50950 used at a 1/400 dilution for 1h. Hoechst33342 #BD5011 was used to stain the cell nuclei (blue).

Immunoprecipitation of MCF-7 cell lysates using Tubulin  $\beta$  mAb (Sepharose Bead Conjugate)#BD0048 (lane 2 and lane 3). Lane 1 is 30% input. The western blot was probed using Tubulin  $\beta$  pAb.

### Note:

For research use only, not for use in diagnostic procedure.

### Bioworld Technology, Inc.

Add: 1660 South Highway 100, Suite 500 St. Louis Park, MN 55416, USA.

Email: [info@bioworld.com](mailto:info@bioworld.com)

Tel: 6123263284

Fax: 6122933841

### Bioworld technology, co. Ltd.

Add: No 9, weidi road Qixia District Nanjing, 210046, P. R. China.

Email: [info@biogot.com](mailto:info@biogot.com)

Tel: 0086-025-68037686

Fax: 0086-025-68035151