

Calnexin (D577) polyclonal antibody

Catalog: BS1438

Host: Rabbit

Reactivity: Human, Mouse, Rat

BackGround:

Calnexin and Calregulin (also called Calreticulin) are calcium-binding proteins that are localized to the endoplasmic reticulum—Calnexin to the membrane and Calregulin to the lumen. Calnexin is a type I membrane protein that interacts with newly synthesized glycoproteins in the endoplasmic reticulum. It may play a role in assisting with protein assembly and in retaining unassembled protein subunits in the endoplasmic reticulum. Calregulin has both low- and high-affinity calcium-binding sites. Neither Calnexin nor Calregulin contains the calcium-binding “E-F hand” motif found in calmodulins. Calnexin and Calregulin are important for the maturation of glycoproteins in the endoplasmic reticulum and appear to bind many of the same proteins.

Product:

Rabbit IgG, 1mg/ml in PBS with 0.02% sodium azide, 50% glycerol, pH7.2

Molecular Weight:

~ 90 kDa

Swiss-Prot:

P27824

Purification&Purity:

The antibody was affinity-purified from rabbit antiserum by affinity-chromatography using epitope-specific immunogen and the purity is > 95% (by SDS-PAGE).

Applications:

WB: 1:500~1:1000

IHC/IF: 1:50~1:200

IP: 1:10~1:100

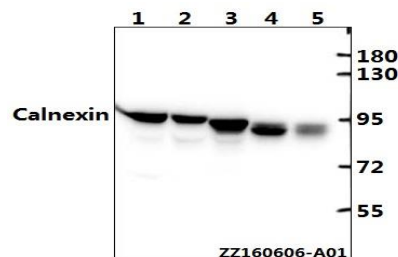
Storage&Stability:

Store at 4 °C short term. Aliquot and store at -20 °C long term. Avoid freeze-thaw cycles.

Specificity:

Calnexin (D577) polyclonal antibody detects endogenous levels of Calnexin protein.

DATA:



Western blot (WB) analysis of Calnexin (D577) polyclonal antibody at 1:500 dilution

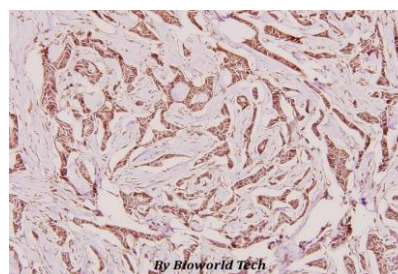
Lane1:786-O whole cell lysate(40ug)

Lane2:HEK293T whole cell lysate(40ug)

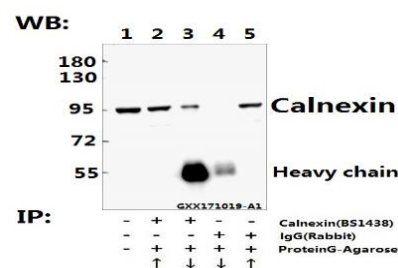
Lane3:PC12 whole cell lysate(40ug)

Lane4:The kidney tissue lysate of Fetal Mouse(40ug)

Lane5:The kidney tissue lysate of Fetal Rat(40ug)



Immunohistochemistry (IHC) analyzes of Calnexin (D577) pAb in paraffin-embedded human breast carcinoma tissue at 1:100.



Immunoprecipitation of L02 whole cell lysate using Calnexin (D577) pAb (Sepharose Bead Conjugate) #BD0047 (lane 2 and lane 3) and Nonspecific IgG Control (Sepharose Bead Conjugate) #BD0047 (lane 4 and lane 5). Lane 1 is 20% input. The western blot was probed using Calnexin (D577) pAb #BS1438. “↑”(supernatant); “↓”(deposition)

Bioworld Technology, Inc.

Add: 1660 South Highway 100, Suite 500 St. Louis Park, MN 55416, USA.

Email: info@bioworld.com

Tel: 6123263284

Fax: 6122933841

Bioworld technology, co. Ltd.

Add: No 9, weidi road Qixia District Nanjing, 210046, P. R. China.

Email: info@biogot.com

Tel: 0086-025-68037686

Fax: 0086-025-68035151



PRODUCT DATA SHEET

Bioworld Technology, Inc.

Note:

For research use only, not for use in diagnostic procedure.

Bioworld Technology, Inc.

Add: 1660 South Highway 100, Suite 500 St. Louis Park,
MN 55416, USA.

Email: info@bioworld.com

Tel: 6123263284

Fax: 6122933841

Bioworld technology, co. Ltd.

Add: No 9, weidi road Qixia District Nanjing, 210046,
P. R. China.

Email: info@biogot.com

Tel: 0086-025-68037686

Fax: 0086-025-68035151