

Rad17 (A639) polyclonal antibody

Catalog: BS1421

Host: Rabbit

Reactivity: Human, Mouse, Rat

Background:

DNA damage results in the arrest of cell cycle progression, allowing the damaged DNA to be repaired prior to replication. Checkpoints exist at several cell cycle phase transitions to maintain this genetic integrity. Rad9, Rad17, Rad24 and Mec3 are involved in activating the G1 and G2 checkpoints. Pol2 (also known as Dun2), encoding the catalytic subunit of DNA polymerase epsilon, plays a role in activating the S phase checkpoint. The protein kinase Rad53 (also designated Spk1, Mec2 or Sad1) is essential for both G2 and S phase arrest. Activation of Rad53 is regulated by Mec1 (also known as Esr1 and Sad3), a homolog of the human ATM protein. Pds1 and Mad2 both regulate checkpoints associated with incomplete spindle replication. Dun1, another protein kinase, plays a role in transducing the DNA damage signal.

Product:

Rabbit IgG, 1mg/ml in PBS with 0.02% sodium azide, 50% glycerol, pH7.2

Molecular Weight:

~ 80 kDa

Swiss-Prot:

O75943

Purification&Purity:

The antibody was affinity-purified from rabbit antiserum by affinity-chromatography using epitope-specific immunogen and the purity is > 95% (by SDS-PAGE).

Applications:

WB: 1:500~1:1000

IHC: 1:50~1:200

Storage&Stability:

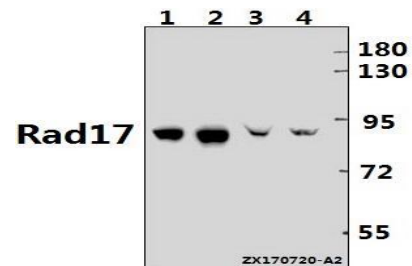
Store at 4 °C short term. Aliquot and store at -20 °C long

term. Avoid freeze-thaw cycles.

Specificity:

Rad17 (A639) polyclonal antibody detects endogenous levels of Rad17 protein.

DATA:



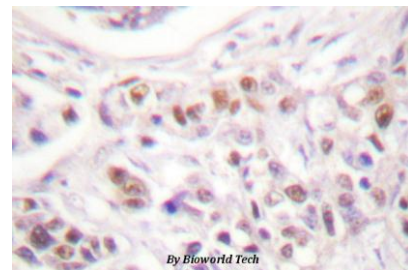
Western blot (WB) analysis of Rad17 (A639) pAb at 1:500 dilution

Lane1:SGC7901 whole cell lysate(20ug)

Lane2:HCT116 whole cell lysate(20ug)

Lane3:C6 whole cell lysate(40ug)

Lane4:CT26 whole cell lysate(40ug)



Immunohistochemistry (IHC) analyzes of Rad17 (A639) pAb in paraffin-embedded human breast carcinoma tissue.

Note:

For research use only, not for use in diagnostic procedure.

Bioworld Technology, Inc.

Add: 1660 South Highway 100, Suite 500 St. Louis Park, MN 55416, USA.

Email: info@bioworld.com

Tel: 6123263284

Fax: 6122933841

Bioworld technology, co. Ltd.

Add: No 9, weidi road Qixia District Nanjing, 210046, P. R. China.

Email: info@biogot.com

Tel: 0086-025-68037686

Fax: 0086-025-68035151