

Caspase-6 (L251) polyclonal antibody

Catalog: BS1386

Host: Rabbit

Reactivity: Human, Mouse, Rat

Background:

Caspase-6 (Mch2) is one of the major executioner caspases functioning in cellular apoptotic processes. Upon apoptotic stimulation, initiator caspases such as caspase-9 are cleaved and activated. The activated upstream caspases further process downstream executioner caspases, such as caspase-3 and caspase-6, by cleaving them into large and small subunits, thereby initiating a caspase cascade leading to apoptosis. One of the major targets for caspase-6 is the membrane associated protein lamin A. The cleavage of this protein causes cell membrane malfunction, membrane blebbing and eventual cell death.

Product:

1 mg/ml in Phosphate buffered saline (PBS) with 0.05% sodium azide, approx. pH 7.2.

Molecular Weight:

~ 35 kDa

Swiss-Prot:

P55212

Purification&Purity:

The antibody was affinity-purified from rabbit antiserum by affinity-chromatography using epitope-specific immunogen and the purity is > 95% (by SDS-PAGE).

Applications:

WB: 1:500~1:1000

IHC: 1:50~1:200

IF: 1:50~1:200

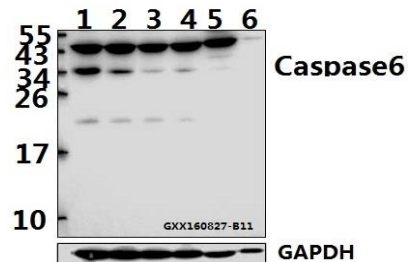
Storage&Stability:

Store at 4 °C short term. Aliquot and store at -20 °C long term. Avoid freeze-thaw cycles.

Specificity:

Caspase-6 (L251) polyclonal antibody detects endogenous levels of Caspase-6 protein.

DATA:



Western blot (WB) analysis of Caspase 6 (L251) pAb at 1:500 dilution

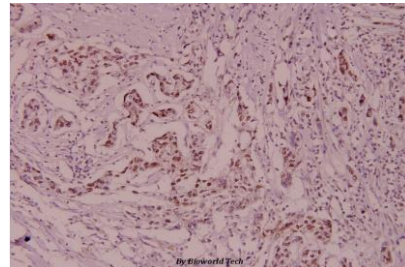
Lane1:C6 whole cell lysate(40ug)

Lane2:3T3-L1 whole cell lysate(40ug)

Lane3:HeLa whole cell lysate(40ug)

Lane4:Jurkat whole cell lysate(40ug)

Lane5:HEK293T whole cell lysate(40ug)



Immunohistochemistry (IHC) analyzes of Caspase-6 (L251) pAb in paraffin-embedded human breast carcinoma tissue at 1:100.

Note:

For research use only, not for use in diagnostic procedure.

Bioworld Technology, Inc.

Add: 1660 South Highway 100, Suite 500 St. Louis Park, MN 55416, USA.

Email: info@bioworld.com

Tel: 6123263284

Fax: 6122933841

Bioworld technology, co. Ltd.

Add: No 9, weidi road Qixia District Nanjing, 210046, P. R. China.

Email: info@biogot.com

Tel: 0086-025-68037686

Fax: 0086-025-68035151