

## Amylin (H28) polyclonal antibody

Catalog: BS1381

Host: Rabbit

Reactivity: Human, Mouse, Rat

### Background:

Adrenomedullin (AM), alpha- and beta-calcitonin gene-related peptide (CGRP), calcitonin (CT), and amylin are homologous polypeptides with overlapping biological actions such as vasodilatation and inhibition of bone resorption. Amylin (Islet/insulinoma amyloid polypeptide or IAPP) is a 37-amino acid monomeric polypeptide isolated from pancreatic amyloid. This protein, with a calculated molecular mass of 4 kDa, is a major component of amyloid-rich pancreatic extracts of three type 2 diabetic patients. IAPP has cysteine residues in positions 2 and 7, a feature found in all known calcitonin gene-related peptides. IAPP shows 46% amino acid sequence homology with CGRP II. Since IAPP has been demonstrated immunohistochemically in normal beta cells of several mammals, it probably has an important role in respect to pancreatic islet function.

### Product:

Rabbit IgG, 1mg/ml in PBS with 0.02% sodium azide, 50% glycerol, pH7.2

### Molecular Weight:

~ 10 kDa

### Swiss-Prot:

P10997

### Purification&Purity:

The antibody was affinity-purified from rabbit antiserum by affinity-chromatography using epitope-specific immunogen and the purity is > 95% (by SDS-PAGE).

### Applications:

IHC: 1:50~1:200

IF: 1:50~1:200

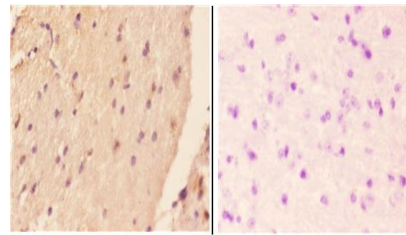
### Storage&Stability:

Store at 4 °C short term. Aliquot and store at -20 °C long term. Avoid freeze-thaw cycles.

### Specificity:

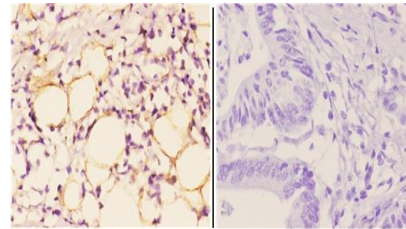
Amylin (H28) polyclonal antibody detects endogenous levels of Amylin protein.

### DATA:



BS1381  
Lot CJ36131

Immunohistochemistry (IHC) analyzes of Amylin (H28) pAb in paraffin-embedded mouse brain tissue at 1:50, showing distinct cytoplasmic membrane and secreted staining. Negative control (the right) Using PBS instead of primary antibody, secondary antibody is Goat Anti-Rabbit IgG-biotin followed by avidin-peroxidase.



BS1381  
Lot CJ36131

Immunohistochemistry (IHC) analyzes of Amylin (H28) pAb in paraffin-embedded human colon carcinoma tissue at 1:50, showing distinct cytoplasmic membrane and secreted staining. Negative control (the right) Using PBS instead of primary antibody, secondary antibody is Goat Anti-Rabbit IgG-biotin followed by avidin-peroxidase.

### Note:

For research use only, not for use in diagnostic procedure.

### Bioworld Technology, Inc.

Add: 1660 South Highway 100, Suite 500 St. Louis Park, MN 55416, USA.

Email: [info@bioworld.com](mailto:info@bioworld.com)

Tel: 6123263284

Fax: 6122933841

### Bioworld technology, co. Ltd.

Add: No 9, weidi road Qixia District Nanjing, 210046, P. R. China.

Email: [info@biogot.com](mailto:info@biogot.com)

Tel: 0086-025-68037686

Fax: 0086-025-68035151