

Synaptophysin (L128) polyclonal antibody

Catalog: BS1345

Host: Rabbit

Reactivity: Human, Mouse, Rat

BackGround:

Synaptic vesicles participate in a cycle of fusion with the plasma membrane and reformation by endocytosis. Synaptic vesicle protein synaptophysin (SYP) is targeted to early endosomes in transfected fibroblasts and in neuroendocrine cells. SYP is an N-glycosylated integral membrane protein found in neurons and endocrine cells that associates into hexamers to form a large conductance channel. SYP contains four transmembrane domains and may function as a gap junction-like channel. Membrane cholesterol specifically interacts with SYP to play a role in vesicle formation. Synaptobrevin (VAMP) also binds to SYP and the resultant complex is upregulated during neuronal development, but is absent in exocytosis fusion complex. Thus, the synaptophysin-synaptobrevin complex is not essential for exocytosis, but rather provides a pool of synaptobrevin for exocytosis.

Product:

Rabbit IgG, 1mg/ml in PBS with 0.02% sodium azide, 50% glycerol, pH7.2

Molecular Weight:

~ 38 kDa

Swiss-Prot:

P08247

Purification&Purity:

The antibody was affinity-purified from rabbit antiserum by affinity-chromatography using epitope-specific immunogen and the purity is > 95% (by SDS-PAGE).

Applications:

WB: 1:500~1:1000

IHC: 1:50~1:200

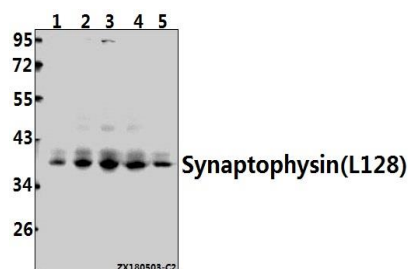
Storage&Stability:

Store at 4 °C short term. Aliquot and store at -20 °C long term. Avoid freeze-thaw cycles.

Specificity:

Synaptophysin (L128) polyclonal antibody detects endogenous levels of Synaptophysin protein.

DATA:



Western blot (WB) analysis of Synaptophysin (L128) pAb at 1:500 dilution

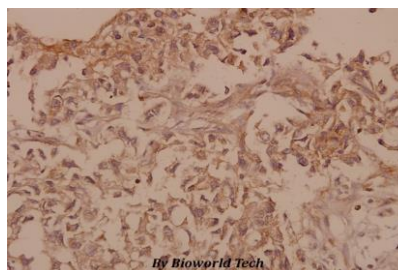
Lane1:The Brain tissue lysate of Mouse(40ug)

Lane2:The Brain tissue lysate of Rat(40ug)

Lane3:U-87MG whole cell lysate(40ug)

Lane4:Panc1 whole cell lysate(40ug)

Lane5:HCT116 whole cell lysate(40ug)



Immunohistochemistry (IHC) analyzes of Synaptophysin (L128) pAb in paraffin-embedded human breast carcinoma tissue at 1:50.

Note:

For research use only, not for use in diagnostic procedure.

Bioworld Technology, Inc.

Add: 1660 South Highway 100, Suite 500 St. Louis Park, MN 55416, USA.

Email: info@bioworld.com

Tel: 6123263284

Fax: 6122933841

Bioworld technology, co. Ltd.

Add: No 9, weidi road Qixia District Nanjing, 210046, P. R. China.

Email: info@biogot.com

Tel: 0086-025-68037686

Fax: 0086-025-68035151