

MMP-14 (P509) polyclonal antibody

Catalog: BS1232

Host: Rabbit

Reactivity: Human, Mouse, Rat

Background:

The matrix metalloproteinases (MMP) are a family of peptidase enzymes responsible for the degradation of extracellular matrix components, including collagen, gelatin, fibronectin, laminin and proteoglycan. Transcription of MMP genes is differentially activated by phorbol ester, lipopolysaccharide (LPS) or staphylococcal enterotoxin B (SEB). MMP catalysis requires both calcium and zinc. Membrane-type matrix metalloproteinases, including MT-MMP-1 (also designated MMP-14), MT-MMP-2 (also designated MMP-15), MT-MMP-3 (also designated MMP-16) and MT-MMP-4 (also designated MMP-17) are type I membrane proteins that function to activate other MMPs. MT-MMP activation appears to be mediated by members of the proprotein convertase family, suggesting that a proprotein convertase/MT-MMP/MMP cascade may be involved in the regulation of ECM turnover.

Product:

Rabbit IgG, 1mg/ml in PBS with 0.02% sodium azide, 50% glycerol, pH7.2

Molecular Weight:

~ 53, 65 kDa

Swiss-Prot:

P50281

Purification&Purity:

The antibody was affinity-purified from rabbit antiserum

by affinity-chromatography using epitope-specific immunogen and the purity is > 95% (by SDS-PAGE).

Applications:

IHC: 1:50~1:200

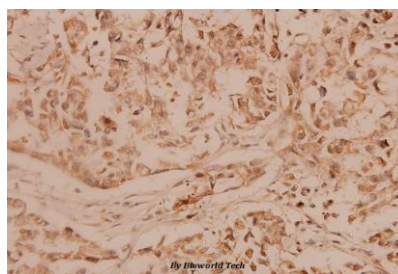
Storage&Stability:

Store at 4 °C short term. Aliquot and store at -20 °C long term. Avoid freeze-thaw cycles.

Specificity:

MMP-14 (P509) polyclonal antibody detects endogenous levels of MMP-14 protein.

DATA:



Immunohistochemistry (IHC) analyzes of MMP-14 (P509) pAb in paraffin-embedded human breast carcinoma tissue at 1:100.

Note:

For research use only, not for use in diagnostic procedure.

Bioworld Technology, Inc.

Add: 1660 South Highway 100, Suite 500 St. Louis Park, MN 55416, USA.

Email: info@bioworld.com

Tel: 6123263284

Fax: 6122933841

Bioworld technology, co. Ltd.

Add: No 9, weidi road Qixia District Nanjing, 210046, P. R. China.

Email: info@biogot.com

Tel: 0086-025-68037686

Fax: 0086-025-68035151