

Ku-70 (R586) polyclonal antibody

Catalog: BS1212

Host: Rabbit

Reactivity: Human, Mouse, Rat

Background:

The Ku protein is localized in the nucleus and is composed of subunits referred to as Ku-70 (or p70) and Ku-86 (or p86), which is also known by the synonym Ku-80 (or p80). Ku was first described as an autoantigen to which antibodies were produced in a patient with scleroderma-polymyositis overlap syndrome, and was later found in the sera of patients with other rheumatic diseases. Both subunits of the Ku protein have been cloned, and a number of functions have been proposed for Ku, including cell signaling, DNA replication and transcriptional activation.

Product:

1 mg/ml in Phosphate buffered saline (PBS) with 15 mM sodium azide, approx. pH 7.2.

Molecular Weight:

~ 70 kDa

Swiss-Prot:

P12956

Purification&Purity:

The antibody was affinity-purified from rabbit antiserum by affinity-chromatography using epitope-specific immunogen and the purity is > 95% (by SDS-PAGE).

Applications:

WB: 1:500~1:1000

IHC: 1:50~1:200

IF: 1:50~1:200

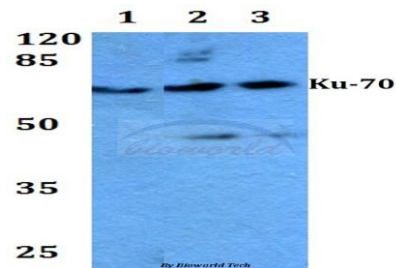
Storage&Stability:

Store at 4 °C short term. Aliquot and store at -20 °C long term. Avoid freeze-thaw cycles.

Specificity:

Ku70 (R586) polyclonal antibody detects endogenous levels of Ku70 protein.

DATA:

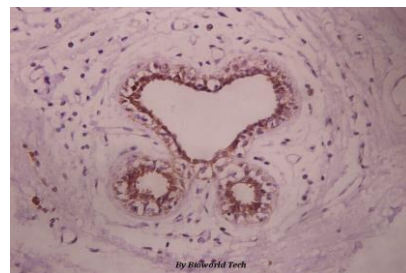


Western blot (WB) analysis of Ku-70 (R586) polyclonal antibody at 1:500 dilution

Lane1:HEK293T whole cell lysate

Lane2:sp2/0 whole cell lysate

Lane3:PC12 whole cell lysate



Immunohistochemistry (IHC) analyzes of Ku-70 (R586) pAb in paraffin-embedded human breast carcinoma tissue at 1:100.

Note:

For research use only, not for use in diagnostic procedure.

Bioworld Technology, Inc.

Add: 1660 South Highway 100, Suite 500 St. Louis Park, MN 55416, USA.

Email: info@bioworld.com

Tel: 6123263284

Fax: 6122933841

Bioworld technology, co. Ltd.

Add: No 9, weidi road Qixia District Nanjing, 210046, P. R. China.

Email: info@biogot.com

Tel: 0086-025-68037686

Fax: 0086-025-68035151