

## Involucrin (P568) polyclonal antibody

Catalog: BS1189

Host: Rabbit

Reactivity: Human, Mouse, Rat

### Background:

Involucrin is a precursor protein of the keratinocyte cornified envelope, which is formed beneath the inner surface of the cell membrane during terminal differentiation. Involucrin first appears in the cell cytosol but ultimately becomes cross-linked to membrane proteins by transglutaminase. During keratinocyte terminal differentiation glutamine residues of involucrin become covalently cross-linked to other envelope precursors via covalent  $\epsilon$ -( $\gamma$ -glutamyl) lysine bonds. Moreover, its large size allows involucrin to cross-link molecules that are separated by substantial distances in the cornified envelope. These properties allow a single involucrin molecule to form multiple cross-links, in multiple spatial planes, with other envelope precursors. Involucrin is specifically expressed in Chinese hamster ovarian cells (fibroblasts), PtK2 rat kangaroo kidney cells (simple epithelial) and rat epidermal keratinocytes (stratifying squamous epithelial).

### Product:

Rabbit IgG, 1mg/ml in PBS with 0.02% sodium azide, 50% glycerol, pH7.2

### Molecular Weight:

~ 68 kDa

### Swiss-Prot:

P07476

### Purification&Purity:

The antibody was affinity-purified from rabbit antiserum by affinity-chromatography using epitope-specific immunogen and the purity is > 95% (by SDS-PAGE).

### Applications:

WB: 1:500~1:1000

IHC: 1:50~1:200

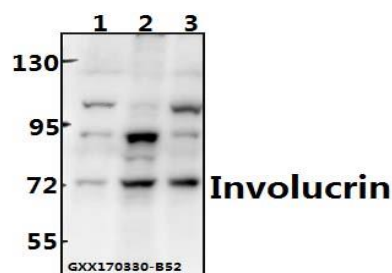
### Storage&Stability:

Store at 4 °C short term. Aliquot and store at -20 °C long term. Avoid freeze-thaw cycles.

### Specificity:

Involucrin (P568) polyclonal antibody detects endogenous levels of Involucrin protein.

### DATA:

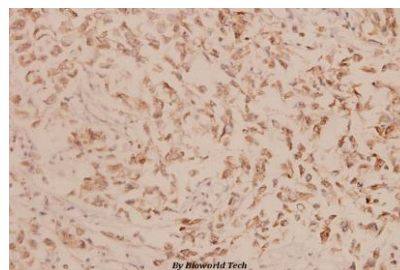


Western blot (WB) analysis of Involucrin (P568) polyclonal antibody at 1:500 dilution

Lane1:L02 whole cell lysate(40ug)

Lane2:A549 whole cell lysate(40ug)

Lane3:HepG2 whole cell lysate(40ug)



Immunohistochemistry (IHC) analyzes of Involucrin (P568) pAb in paraffin-embedded human breast carcinoma tissue at 1:100.

### Note:

For research use only, not for use in diagnostic procedure.

### Bioworld Technology, Inc.

Add: 1660 South Highway 100, Suite 500 St. Louis Park, MN 55416, USA.

Email: [info@bioworld.com](mailto:info@bioworld.com)

Tel: 6123263284

Fax: 6122933841

### Bioworld technology, co. Ltd.

Add: No 9, weidi road Qixia District Nanjing, 210046, P. R. China.

Email: [info@biogot.com](mailto:info@biogot.com)

Tel: 0086-025-68037686

Fax: 0086-025-68035151