

## GABAB R1 (I902) polyclonal antibody

Catalog: BS1133

Host: Rabbit

Reactivity: Human, Mouse, Rat

### BackGround:

The GABAB R receptor is a heterodimer that consists of two multi-pass membrane proteins, designated GABAB R1 and GABAB R2, both of which belong to the G protein-coupled receptor family and are highly expressed in brain tissue. Together, GABAB R1 and GABAB R2 play a crucial role in the fine-tuning of inhibitory synaptic transmissions and are implicated in slow wave sleep, muscle relaxation, hippocampal long-term potentiation and antinociception events. Both GABAB R1 and GABAB R2 are regulated by G proteins that have a variety of functions, including activation of potassium channels, inhibition of adenylyl cyclase (A cyclase) activity and modulation of inositol phospholipid hydrolysis.

### Product:

Rabbit IgG, 1mg/ml in PBS with 0.02% sodium azide, 50% glycerol, pH7.2

### Molecular Weight:

~ 110 kDa

### Swiss-Prot:

Q9UBS5

### Purification&Purity:

The antibody was affinity-purified from rabbit antiserum by affinity-chromatography using epitope-specific immunogen and the purity is > 95% (by SDS-PAGE).

### Applications:

IHC: 1:50~1:200

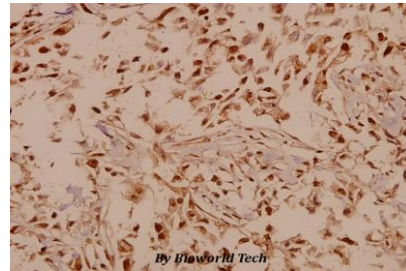
### Storage&Stability:

Store at 4 °C short term. Aliquot and store at -20 °C long term. Avoid freeze-thaw cycles.

### Specificity:

GABAB R1 (I902) polyclonal antibody detects endogenous levels of GABA-B Receptor protein.

### DATA:



Immunohistochemistry (IHC) analyzes of GABAB R1 (I902) pAb in paraffin-embedded human breast carcinoma tissue at 1:50.

### Note:

For research use only, not for use in diagnostic procedure.

### Bioworld Technology, Inc.

Add: 1660 South Highway 100, Suite 500 St. Louis Park, MN 55416, USA.

Email: [info@bioworld.com](mailto:info@bioworld.com)

Tel: 6123263284

Fax: 6122933841

### Bioworld technology, co. Ltd.

Add: No 9, weidi road Qixia District Nanjing, 210046, P. R. China.

Email: [info@biogot.com](mailto:info@biogot.com)

Tel: 0086-025-68037686

Fax: 0086-025-68035151