

FANCD2 (P216) polyclonal antibody

Catalog: BS1120

Host: Rabbit

Reactivity: Human, Mouse, Rat

BackGround:

The FA proteins lack sequence homologies or motifs that could point to a molecular function. Phosphorylation of FANCD2 (Fanconi anemia complementation group) proteins are thought to be important for the function of the FA pathway. Several FA proteins, including FANCA, FANCC, FANCF, and FANCG, interact in a nuclear complex, and this complex is required for the activation (monoubiquitination) of the downstream FANCD2 protein. When monoubiquitinated, the FANCD2 protein co-localizes with the breast cancer susceptibility protein BRCA1 in DNA damage induced foci. In male meiosis, FANCD2 also co-localizes with BRCA1 at synaptonemal complexes. The human FANCD2 gene maps to chromosome 3p25.3, contains 44 exons and encodes a 1,451 amino acid nuclear protein that exists as two protein isoforms.

Product:

Rabbit IgG, 1mg/ml in PBS with 0.02% sodium azide, 50% glycerol, pH7.2

Molecular Weight:

~ 166 kDa

Swiss-Prot:

Q9BXW9

Purification&Purity:

The antibody was affinity-purified from rabbit antiserum

by affinity-chromatography using epitope-specific immunogen and the purity is > 95% (by SDS-PAGE).

Applications:

IHC: 1:50~1:200

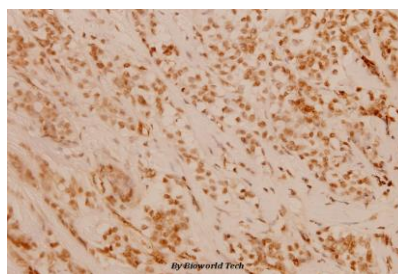
Storage&Stability:

Store at 4 °C short term. Aliquot and store at -20 °C long term. Avoid freeze-thaw cycles.

Specificity:

FANCD2 (P216) polyclonal antibody detects endogenous levels of FANCD2 protein.

DATA:



Immunohistochemistry (IHC) analyzes of FANCD2 (P216) pAb in paraffin-embedded human breast carcinoma tissue at 1:100.

Note:

For research use only, not for use in diagnostic procedure.

Bioworld Technology, Inc.

Add: 1660 South Highway 100, Suite 500 St. Louis Park, MN 55416, USA.

Email: info@bioworld.com

Tel: 6123263284

Fax: 6122933841

Bioworld technology, co. Ltd.

Add: No 9, weidi road Qixia District Nanjing, 210046, P. R. China.

Email: info@biogot.com

Tel: 0086-025-68037686

Fax: 0086-025-68035151