

CUL1 (Y761) polyclonal antibody

Catalog: BS1081

Host: Rabbit

Reactivity: Human, Mouse, Rat

Background:

CUL-1, which is the mammalian homolog of yeast Cdc53, is an integral component of the E3 ubiquitin ligase complex designated SCF. The SCF (Skp1/CUL-1/F-box protein complex) consists of Skp1 associating with both CUL-1 and an F-box protein, such as Skp2, which determines the substrate specificity of the complex. CUL-1-mediated ubiquitination results in the degradation of cell cycle proteins cyclin D, p21 and cyclin E. Another cullin, CUL-3, facilitates the degradation of cyclin E independent of SCF activity, while CUL-2 associates with the tumor suppressing protein VHL and elongin B to form VBC complexes, which structurally resemble the SCF ligase.

Product:

Rabbit IgG, 1mg/ml in PBS with 0.02% sodium azide, 50% glycerol, pH7.2

Molecular Weight:

~ 90 kDa

Swiss-Prot:

Q13616

Purification&Purity:

The antibody was affinity-purified from rabbit antiserum by affinity-chromatography using epitope-specific immunogen and the purity is > 95% (by SDS-PAGE).

Applications:

WB: 1:500~1:1000

IHC: 1:50~1:200

IF: 1:50~1:200

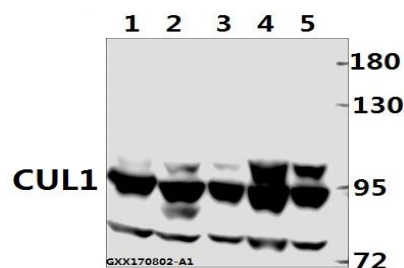
Storage&Stability:

Store at 4 °C short term. Aliquot and store at -20 °C long term. Avoid freeze-thaw cycles.

Specificity:

Cullin 1 (Y761) polyclonal antibody detects endogenous levels of Cullin 1 protein.

DATA:



Western blot (WB) analysis of CUL1 (Y761) pAb at 1:500 dilution

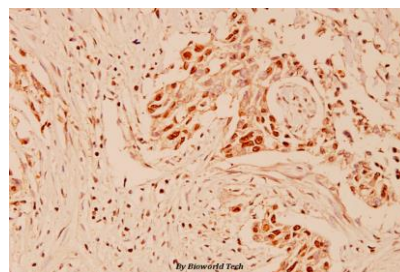
Lane1: The Brain tissue lysate of Rat(40ug)

Lane2: The Lung tissue lysate of Rat(40ug)

Lane3: The Lung tissue lysate of Mouse(40ug)

Lane4: A549 whole cell lysate(40ug)

Lane5: HCC827 whole cell lysate(40ug)



Immunohistochemistry (IHC) analyzes of CUL-1 (Y761) pAb in paraffin-embedded human breast carcinoma tissue at 1:100.

Note:

For research use only, not for use in diagnostic procedure.

Bioworld Technology, Inc.

Add: 1660 South Highway 100, Suite 500 St. Louis Park, MN 55416, USA.

Email: info@bioworld.com

Tel: 6123263284

Fax: 6122933841

Bioworld technology, co. Ltd.

Add: No 9, weidi road Qixia District Nanjing, 210046, P. R. China.

Email: info@biogot.com

Tel: 0086-025-68037686

Fax: 0086-025-68035151