

Claudin-7 (P202) polyclonal antibody

Catalog: BS1070

Host: Rabbit

Reactivity: Human, Mouse, Rat

Background:

The Claudin superfamily consists of many structurally related proteins in humans. These proteins are important structural and functional components of tight junctions in paracellular transport. Claudins are located in both epithelial and endothelial cells in all tight junction-bearing tissues. Three classes of proteins are known to localize to tight junctions, including the Claudins, Occludin and junction adhesion molecule (JAM). Claudins, which consist of four transmembrane domains and two extracellular loops, make up tight junction strands. Claudin expression is highly restricted to specific regions of different tissues and may have an important role in transcellular transport through tight junctions. mRNA studies indicate that claudin-7 is specifically expressed in mouse lung and kidney, but not in heart, brain, spleen, liver, skeletal muscle or testis. The gene encoding human claudin-7 maps to chromosome 17p13.

Product:

Rabbit IgG, 1mg/ml in PBS with 0.02% sodium azide, 50% glycerol, pH7.2

Molecular Weight:

~ 23 kDa

Swiss-Prot:

O95471

Purification&Purity:

The antibody was affinity-purified from rabbit antiserum by affinity-chromatography using epitope-specific immunogen and the purity is > 95% (by SDS-PAGE).

Applications:

WB: 1:500~1:1000

IHC/IF: 1:50~1:200

IP: 1:50~1:200

Storage&Stability:

Store at 4 °C short term. Aliquot and store at -20 °C long term. Avoid freeze-thaw cycles.

Specificity:

Claudin 7 (P202) polyclonal antibody detects endogenous levels of Claudin 7 protein.

DATA:



Western blot (WB) analysis of Claudin-7 (T202) polyclonal antibody at 1:500 dilution

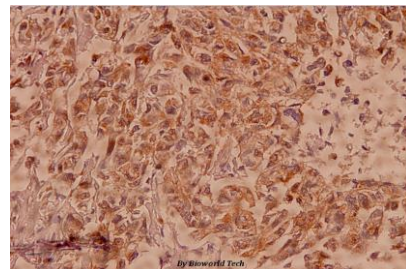
Lane1:HCC827 whole cell lysate(40ug)

Lane2:The Lung tissue lysate of Mouse(40ug)

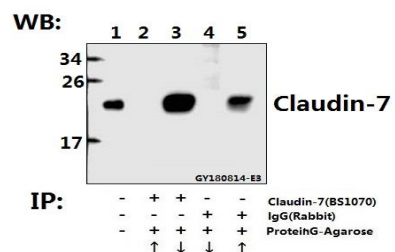
Lane3:The Lung tissue lysate of Rat(40ug)

Lane4:A549 whole cell lysate(40ug)

Lane5:L02 whole cell lysate(40ug)



Immunohistochemistry (IHC) analyzes of Claudin-7 (P202) pAb in paraffin-embedded human breast carcinoma tissue at 1:100.



Immunoprecipitation of Hela cell lysate using Claudin-7 (P202) pAb (Sepharose Bead Conjugate) #BD0048(lane 2 and lane 3) and Nonsp-

Bioworld Technology, Inc.

Add: 1660 South Highway 100, Suite 500 St. Louis Park, MN 55416, USA.

Email: info@bioworld.com

Tel: 6123263284

Fax: 6122933841

Bioworld technology, co. Ltd.

Add: No 9, weidi road Qixia District Nanjing, 210046, P. R. China.

Email: info@biogot.com

Tel: 0086-025-68037686

Fax: 0086-025-68035151



PRODUCT DATA SHEET

Bioworld Technology, Inc.

cific IgG Control (Sepharose Bead Conjugate) #BD0048 (lane 4 and lane 5). Lane 1 is 30% input. The western blot was probed using Claudin-7 (P202) #BS1070. "↑" (supernatant); "↓" (deposition)

Note:

For research use only, not for use in diagnostic procedure.

Bioworld Technology, Inc.

Add: 1660 South Highway 100, Suite 500 St. Louis Park,
MN 55416, USA.

Email: info@bioworld.com

Tel: 6123263284

Fax: 6122933841

Bioworld technology, co. Ltd.

Add: No 9, weidi road Qixia District Nanjing, 210046,
P. R. China.

Email: info@biogot.com

Tel: 0086-025-68037686

Fax: 0086-025-68035151