

Catenin- α 1/2 (P940) polyclonal antibody

Catalog: BS1040

Host: Rabbit

Reactivity: Human, Mouse, Rat

BackGround:

α -catenins are a group of proteins associated with cadherin cell-cell adhesion molecules and play indispensable roles in the function of the cadherins. α -N-catenin is a linker between cadherin adhesion receptors and the Actin cytoskeleton and is essential for stabilizing dendritic spines in rodent hippocampal neurons in culture. A deletion in this protein causes cerebellar and hippocampal lamination defects and impaired startle reaction. α -E- and α -N-catenin appear to co-localize in cell bodies of neurons in dorsal root ganglia. In mice, α -N-catenin was found to occur at the roof plate of the mesencephalon and diencephalon, coinciding with Wnt-1 expression.

Product:

Rabbit IgG, 1mg/ml in PBS with 0.02% sodium azide, 50% glycerol, pH7.2

Molecular Weight:

~ 100 kDa

Swiss-Prot:

P35221/P26232

Purification&Purity:

The antibody was affinity-purified from rabbit antiserum by affinity-chromatography using epitope-specific immunogen and the purity is > 95% (by SDS-PAGE).

Applications:

WB: 1:500~1:1000

IHC: 1:50~1:200

IF: 1:50~1:200

IP: 1:50~1:200

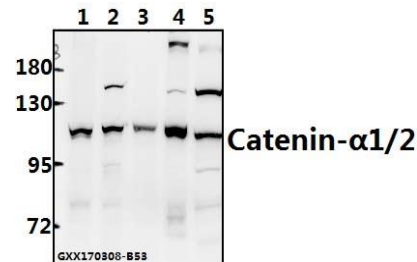
Storage&Stability:

Store at 4 °C short term. Aliquot and store at -20 °C long term. Avoid freeze-thaw cycles.

Specificity:

Catenin- α 1/2 (P940) polyclonal antibody detects endogenous levels of Catenin- α 1/2 protein.

DATA:



Western blot (WB) analysis of Catenin- α 1/2 (P940) polyclonal antibody at 1:500 dilution

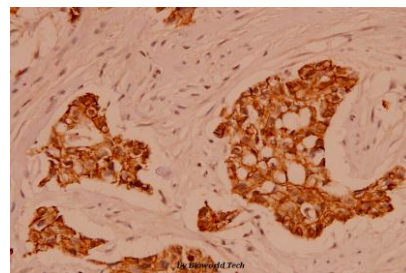
Lane1:MCF-7 whole cell lysate(40ug)

Lane2:A549 whole cell lysate(40ug)

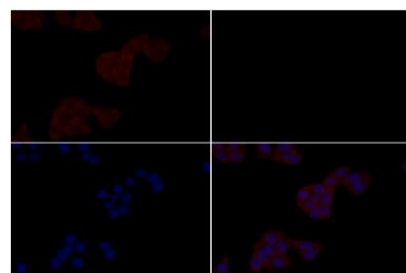
Lane3:COS-7 whole cell lysate(40ug)

Lane4:PC12 whole cell lysate(40ug)

Lane5:CT26 whole cell lysate(40ug)



Immunohistochemistry (IHC) analyzes of Catenin- α 1/2 (P940) pAb in paraffin-embedded human breast carcinoma tissue at 1:100.



Immunofluorescence analysis of MCF-7 cells using Catenin- α 1/2 (P940) pAb at dilution of 1:200 (40x lens).

Bioworld Technology, Inc.

Add: 1660 South Highway 100, Suite 500 St. Louis Park, MN 55416, USA.

Email: info@bioworld.com

Tel: 6123263284

Fax: 6122933841

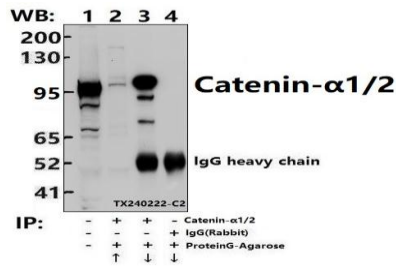
Bioworld technology, co. Ltd.

Add: No 9, weidi road Qixia District Nanjing, 210046, P. R. China.

Email: info@biogot.com

Tel: 0086-025-68037686

Fax: 0086-025-68035151



Note:

For research use only, not for use in diagnostic procedure.

Immunoprecipitation of MCF-7 cell lysates using Catenin-α1/2 pAb (Sepharose Bead Conjugate)#BD0048 (lane 2 and lane 3) and Nonspecific IgG Control (Sepharose Bead Conjugate)#BD0048 (lane 4). Lane 1 is 30% input. The western blot was probed using Catenin-α1/2 pAb.

Bioworld Technology, Inc.

Add: 1660 South Highway 100, Suite 500 St. Louis Park, MN 55416, USA.

Email: info@bioworld.com

Tel: 6123263284

Fax: 6122933841

Bioworld technology, co. Ltd.

Add: No 9, weidi road Qixia District Nanjing, 210046, P. R. China.

Email: info@biogot.com

Tel: 0086-025-68037686

Fax: 0086-025-68035151