

Bim (A2) polyclonal antibody

Catalog: BS1035

Host: Rabbit

Reactivity: Human, Mouse, Rat

BackGround:

Pro-apoptotic Bcl-2 family members promote cell death by neutralizing their anti-apoptotic relatives, which otherwise maintain cell viability by regulating caspase activity. Bim belongs to the BH3-only subgroup of Bcl-2 related proteins and exists in three distinct isoforms, BimS (short), BimL (long) and BimEL (extra long). ERK1/2 phosphorylates BimEL, resulting in rapid degradation of the isoform via the proteasome pathway. At least three sites for ERK1/2 phosphorylation exist on BimEL, whereas ERK1/2 does not effect BimS or BimL, implying a unique role for BimEL in cell survival signaling.

Product:

Rabbit IgG, 1mg/ml in PBS with 0.02% sodium azide, 50% glycerol, pH7.2

Molecular Weight:

~ 25 kDa

Swiss-Prot:

O43521

Purification&Purity:

The antibody was affinity-purified from rabbit antiserum by affinity-chromatography using epitope-specific immunogen and the purity is > 95% (by SDS-PAGE).

Applications:

IHC: 1:50~1:200

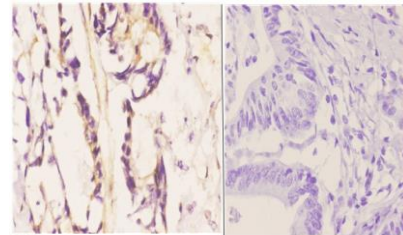
Storage&Stability:

Store at 4 °C short term. Aliquot and store at -20 °C long term. Avoid freeze-thaw cycles.

Specificity:

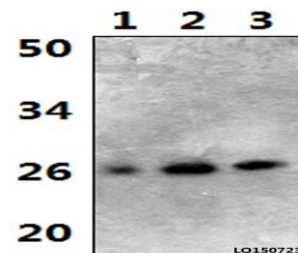
Bim (A2) polyclonal antibody detects endogenous levels of Bim protein.

DATA:



BS1035
Lot C736131

Immunohistochemistry (IHC) analyzes of Bim (A2) pAb in paraffin-embedded human colon carcinoma tissue at 1:50. showing cell membranes and cytoplasmic staining. Negative control (the right) Using PBS instead of primary antibody, secondary antibody is Goat Anti-Rabbit IgG-biotin followed by avidin-peroxidase.



Western blot (WB) analysis of Bim (A2) pAb at 1:500 dilution

Lane1: The Kidney tissue lysate of Rat(41ug)

Lane2: The Kidney tissue lysate of Mouse(38ug)

Lane3: Hela whole cell lysate(40ug)

Note:

For research use only, not for use in diagnostic procedure.

Bioworld Technology, Inc.

Add: 1660 South Highway 100, Suite 500 St. Louis Park, MN 55416, USA.

Email: info@bioworld.com

Tel: 6123263284

Fax: 6122933841

Bioworld technology, co. Ltd.

Add: No 9, weidi road Qixia District Nanjing, 210046, P. R. China.

Email: info@biogot.com

Tel: 0086-025-68037686

Fax: 0086-025-68035151