

Beclin 1 polyclonal antibody

Catalog: AP6020

Host: Rabbit

Reactivity: Human, Mouse, Rat

BackGround:

BECN1 (beclin 1) is a coiled-coil protein that has been implicated as an inhibitor of tumorigenesis. BECN1, which associates with Bcl-2, plays a significant role in autophagy. Autophagy is the degradation of cellular proteins in the lysosomes, and when this pathway is suppressed, cell growth is deregulated. Autophagy is controlled by the same signal transduction pathway that induces the phosphorylation of the ribosomal protein S6, and both are mediated via amino acids. BECN1 expression in various carcinoma cell lines, such as MCF7, is low, whereas it is ubiquitously expressed in normal breast tissue. In transfected MCF7 cells, BECN1 complements autophagocytosis and, subsequently, inhibits cellular proliferation. Additionally, BECN1 shares structural similarity to the yeast autophagy gene product, APG6, and was one of the first mammalian proteins discovered to mediate autophagy.

Product:

Rabbit IgG, 1mg/ml in PBS with 0.02% sodium azide, 50% glycerol, pH7.2

Molecular Weight:

~ 55 kDa

Swiss-Prot:

Q14457

Purification&Purity:

The antibody was affinity-purified from rabbit antiserum by affinity-chromatography using epitope-specific immunogen and the purity is > 95% (by SDS-PAGE).

Applications:

WB: 1:2000~1:5000

IHC: 1:50~1:200

IF: 1:100~1:500

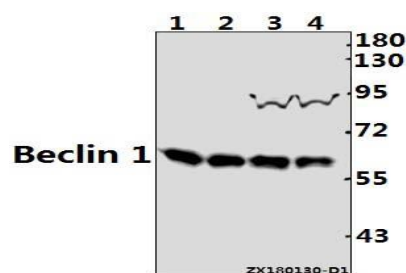
Storage&Stability:

Store at 4 °C short term. Aliquot and store at -20 °C long term. Avoid freeze-thaw cycles.

Specificity:

Beclin 1 polyclonal antibody detects endogenous levels of Beclin 1 protein.

DATA:



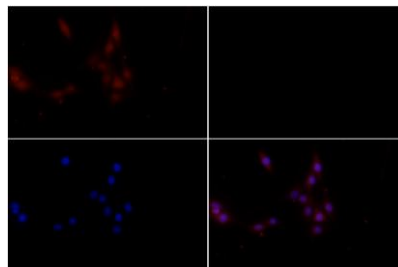
Western blot (WB) analysis of Beclin 1 pAb at 1:2000 dilution

Lane1: AML-12 whole cell lysate(40ug)

Lane2: PMVEC whole cell lysate(40ug)

Lane3: HEK293T whole cell lysate(40ug)

Lane4: A549 whole cell lysate(40ug)



Immunofluorescence analysis of C6 cells using Beclin

1 pAb at dilution of 1:200 (40x lens).

Note:

For research use only, not for use in diagnostic procedure.

Bioworld Technology, Inc.

Add: 1660 South Highway 100, Suite 500 St. Louis Park, MN 55416, USA.

Email: info@bioworld.com

Tel: 6123263284

Fax: 6122933841

Bioworld technology, co. Ltd.

Add: No 9, weidi road Qixia District Nanjing, 210046, P. R. China.

Email: info@biogot.com

Tel: 0086-025-68037686

Fax: 0086-025-68035151



PRODUCT DATA SHEET

Bioworld Biotech Co., Ltd

Bioworld Technology, Inc.

Add: 1660 South Highway 100, Suite 500 St. Louis Park,
MN 55416, USA.

Email: info@bioworld.com

Tel: 6123263284

Fax: 6122933841

Bioworld technology, co. Ltd.

Add: No 9, weidi road Qixia District Nanjing, 210046,
P. R. China.

Email: info@biogot.com

Tel: 0086-025-68037686

Fax: 0086-025-68035151