

## WDR1 Antibody polyclonal antibody

Catalog: AP6007

Host: Rabbit

Reactivity: Human, Mouse, Rat

### Background:

WD-repeats are motifs that are found in a variety of proteins and are characterized by a conserved core of 40-60 amino acids, which commonly form a tertiary propeller structure. While proteins that contain WD-repeats participate in a wide range of cellular functions, they are generally involved in regulatory mechanisms involving signal transduction, apoptosis, transcriptional regulation, cell cycle control. WD repeats serve as sites for protein-protein interaction and some seem to mediate the assembly of protein complexes. With 11 WD repeats, WDR1 (WD repeat domain 1), also known as AIP1 or NORI-1, is a 606 amino acid protein that localizes to the cytoskeleton and is a member of the WD repeat AIP1 family. Existing as two alternatively spliced isoforms, WDR1 induces disassembly of actin filaments in conjunction with ADF/cofilin family proteins.

### Product:

1 mg/ml in Phosphate buffered saline (PBS) with 0.05% sodium azide, approx. pH 7.3.

### Molecular Weight:

~ 66 kDa

### Swiss-Prot:

O75083

### Purification&Purity:

The antibody was affinity-purified from rabbit antiserum by affinity-chromatography using epitope-specific immunogen and the purity is > 95% (by SDS-PAGE).

### Applications:

WB: 1:500~1:1000

IHC: 1:50~1:200

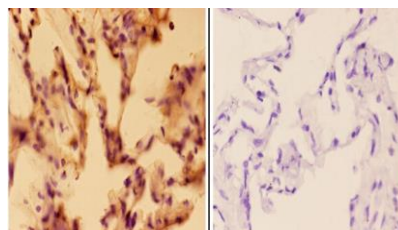
### Storage&Stability:

Store at 4 °C short term. Aliquot and store at -20 °C long term. Avoid freeze-thaw cycles.

### Specificity:

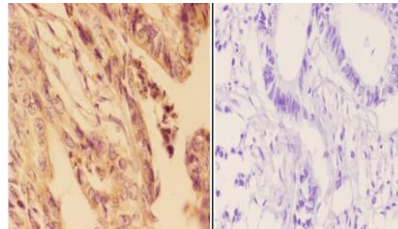
WDR1 polyclonal antibody detects endogenous levels of WDR1 protein.

### DATA:



AP6007  
Lot:AA34151

Immunohistochemistry (IHC) analyzes of WDR1 pAb in paraffin-embedded human lung carcinoma tissue at 1:50, showing cytoplasm staining. Negative control (the right) Using PBS instead of primary antibody, secondary antibody is Goat Anti-Rabbit IgG-biotin followed by avidin-peroxidase.



AP6007  
Lot:AA34151

Immunohistochemistry (IHC) analyzes of WDR1 pAb in paraffin-embedded human rectum carcinoma tissue at 1:50, showing cytoplasm staining. Negative control (the right) Using PBS instead of primary antibody, secondary antibody is Goat Anti-Rabbit IgG-biotin followed by avidin-peroxidase.

### Note:

For research use only, not for use in diagnostic procedure.

### Bioworld Technology, Inc.

Add: 1660 South Highway 100, Suite 500 St. Louis Park, MN 55416, USA.

Email: [info@bioworld.com](mailto:info@bioworld.com)

Tel: 6123263284

Fax: 6122933841

### Bioworld technology, co. Ltd.

Add: No 9, weidi road Qixia District Nanjing, 210046, P. R. China.

Email: [info@biogot.com](mailto:info@biogot.com)

Tel: 0086-025-68037686

Fax: 0086-025-68035151