

Lamin B1 polyclonal antibody

Catalog: AP6001

Host: Rabbit

Reactivity: Human, Mouse, Rat

Background:

An important part of the nucleus is formed by nuclear lamina. Nuclear lamins form a network of filaments at the nucleoplasmic site of the nuclear membrane. Two main subtypes of nuclear lamins can be distinguished, i.e. A type lamins and B type lamins. The A type lamins comprise a set of three proteins arising from the same gene by alternative splicing, i.e. lamin A, lamin C and lamin A-delta-110, while the B-type lamins include two proteins arising from two distinct genes, i.e. lamin B1 and lamin B2. The nuclear lamins comprise a unique subclass of the intermediate filament protein family. They share a molecular domain organisation with the other intermediate filament proteins in that they are fibrous molecules that have an aminoterminal globular head, a central rod of alpha helices and a carboxy terminal globular domain. Many biochemical and molecular features of lamins have been studied, but their functions remain still largely undetermined. One of the functions ascribed to the lamina is the maintenance of the structural integrity of the nucleus.

Product:

Rabbit IgG, 1mg/ml in PBS with 0.02% sodium azide, 50% glycerol, pH7.2

Molecular Weight:

~ 68 kDa

Swiss-Prot:

P20700

Purification&Purity:

The antibody was affinity-purified from rabbit antiserum by affinity-chromatography using epitope-specific immunogen and the purity is > 95% (by SDS-PAGE).

Applications:

WB: 1:5000~1:20000

IHC/IF: 1:100~1:1000

IP: 1:100~1:1000

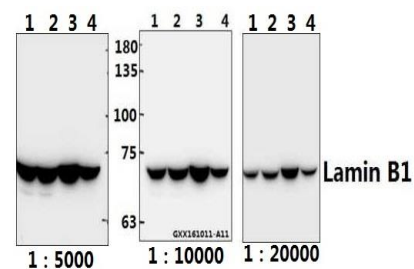
Storage&Stability:

Store at 4 °C short term. Aliquot and store at -20 °C long term. Avoid freeze-thaw cycles.

Specificity:

Lamin B1 polyclonal antibody detects endogenous levels of Lamin B1 protein.

DATA:



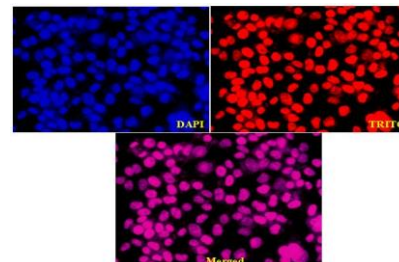
Western blot (WB) analysis of Lamin B1 polyclonal antibody at 1:20000 dilution

Lane1:A549 whole cell lysate(40ug)

Lane2:DLD whole cell lysate(40ug)

Lane3:The Spleen tissue lysate of Mouse(40ug)

Lane4:The Lung tissue lysate of Rat(40ug)



Immunofluorescence image of AP6001 stained HEK293T cells. The cells were 4% paraformaldehyde fixed (20 min) and then incubated in 10% normal goat serum for 1h to permeabilise the cells and block non-specific protein-protein interactions. The cells were then incubated with the antibody Lamin B1 pAb #AP6001(1:200) at 5 µg/ml overnight at +4 °C. The secondary antibody (Red) was Goat Anti-Rabbit IgG (H+L) Rhodamine (TRITC) #BS10250 used at a 1/2000 dilution for 1h. DAPI #BD5014 was used to stain the cell nuclei (blue).

Bioworld Technology, Inc.

Add: 1660 South Highway 100, Suite 500 St. Louis Park, MN 55416, USA.

Email: info@bioworld.com

Tel: 6123263284

Fax: 6122933841

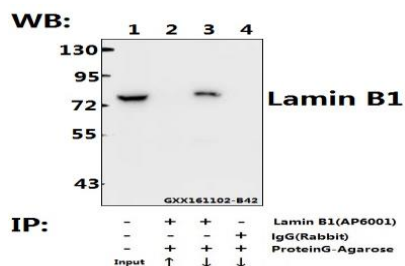
Bioworld technology, co. Ltd.

Add: No 9, weidi road Qixia District Nanjing, 210046, P. R. China.

Email: info@biogot.com

Tel: 0086-025-68037686

Fax: 0086-025-68035151



Immunoprecipitation of the Lung tissue lysate of Mouse using Lamin B1 pAb (Sepharose Bead Conjugate) #BD0047(lane 2 and lane 3) and Nonspecific IgG Control (Sepharose Bead Conjugate)#BD0047 (lane 4) .Lane 1 is 30% input. The western blot was probed using Lamin B1 pAb #AP6001. “↑” (supernatant); “↓” (deposition)

Note:

For research use only, not for use in diagnostic procedure.

Bioworld Technology, Inc.

Add: 1660 South Highway 100, Suite 500 St. Louis Park, MN 55416, USA.

Email: info@bioworld.com

Tel: 6123263284

Fax: 6122933841

Bioworld technology, co. Ltd.

Add: No 9, weidi road Qixia District Nanjing, 210046, P. R. China.

Email: info@biogot.com

Tel: 0086-025-68037686

Fax: 0086-025-68035151