

ULK1 (S317) polyclonal antibody

Catalog: AP1005

Host: Rabbit

Reactivity: Human, Mouse, Rat

BackGround:

VPS34 (vacuolar protein sorting-associated protein 34), also known as VPT29, VPL7, PEP15 or END12, is a 875 amino acid peripheral membrane protein that localizes to the golgi apparatus. Belonging to the PI3/PI4-kinase family, VPS34 is involved in endosome-to-Golgi retrograde transport as part of the VPS34 PI3-kinase complex II. The VPS34 PI3-kinase complex II is required for the endosome-to-Golgi retrieval of PEP1 and KEX2, and the recruitment of VPS5 and VPS7, two components of the retromer complex, to endosomal membranes. It has been suggested that VPS34 may also be involved in ethanol tolerance and cell wall integrity.

Product:

Rabbit IgG, 1mg/ml in PBS with 0.02% sodium azide, 50% glycerol, pH7.2

Molecular Weight:

~ 150 kDa

Swiss-Prot:

O75385

Purification&Purity:

The antibody was affinity-purified from rabbit antiserum by affinity-chromatography using epitope-specific immunogen and the purity is > 95% (by SDS-PAGE).

Applications:

WB: 1:500~1:1000

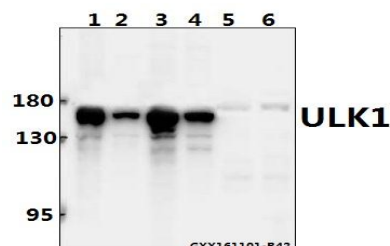
Storage&Stability:

Store at 4 °C short term. Aliquot and store at -20 °C long term. Avoid freeze-thaw cycles.

Specificity:

VPS34 polyclonal antibody detects endogenous levels of VPS34 protein.

DATA:



Western blot (WB) analysis of ULK1 polyclonal antibody at 1:1000 dilution

Lane1:L02 whole cell lysate(20ug)

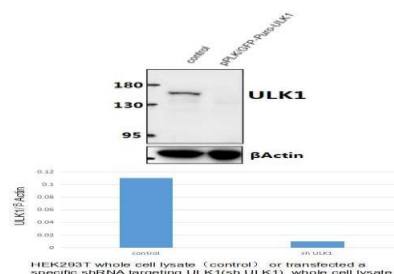
Lane2:Panc1 whole cell lysate(20ug)

Lane3:HEK293T whole cell lysate(40ug)

Lane4:HCC827 whole cell lysate(40ug)

Lane5:The Brain tissue lysate of Rat(40ug)

Lane6:The Brain tissue lysate of Mouse(40ug)



Note:

For research use only, not for use in diagnostic procedure.

Bioworld Technology, Inc.

Add: 1660 South Highway 100, Suite 500 St. Louis Park, MN 55416, USA.

Email: info@bioworld.com

Tel: 6123263284

Fax: 6122933841

Bioworld technology, co. Ltd.

Add: No 9, weidi road Qixia District Nanjing, 210046, P. R. China.

Email: info@biogot.com

Tel: 0086-025-68037686

Fax: 0086-025-68035151