

Beclin 1 polyclonal antibody

Catalog: AP0768

Host: Rabbit

Reactivity: Human, Mouse, Rat

BackGround:

This gene encodes a protein that regulates autophagy, a catabolic process of degradation induced by starvation. The encoded protein is a component of the phosphatidylinositol-3-kinase (PI3K) complex which mediates vesicle-trafficking processes. This protein is thought to play a role in multiple cellular processes, including tumorigenesis, neurodegeneration and apoptosis. Alternative splicing results in multiple transcript variants.

Product:

1mg/ml in PBS with 0.02% sodium azide, 50% glycerol, pH7.2

Molecular Weight:

60KDa

Swiss-Prot:

Q14457

Purification&Purity:

The antibody was affinity-purified from rabbit antiserum by affinity-chromatography using epitope-specific immunogen and the purity is > 95% (by SDS-PAGE).

Applications:

WB, 1:500 - 1:2000 | IF, 1:50 - 1:200

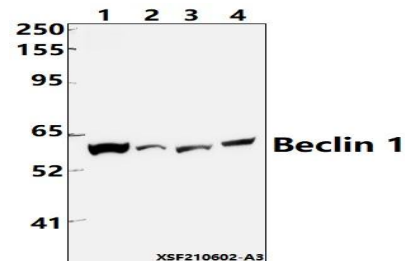
Storage&Stability:

Store at 4 °C short term. Aliquot and store at -20 °C long term. Avoid freeze-thaw cycles.

Specificity:

Polyclonal Antibodies

DATA:



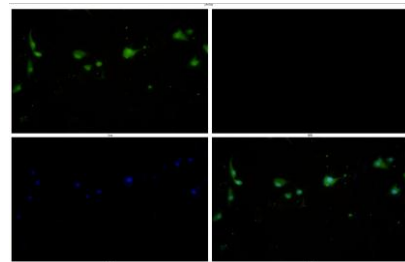
Western blot (WB) analysis of Beclin 1 polyclonal antibody at 1:1000 dilution

Lane1:U-87MG whole cell lysate(40µg)

Lane2:MCF-7 whole cell lysate(40µg)

Lane3:CT26 whole cell lysate(40µg)

Lane4:PC12 whole cell lysate(40µg)



Immunofluorescence analysis of U-87MG cells using Beclin 1 antibody at dilution of 1:50.

Note:

For research use only, not for use in diagnostic procedure.

Bioworld Technology, Inc.

Add: 1660 South Highway 100, Suite 500 St. Louis Park, MN 55416, USA.

Email: info@bioworld.com

Tel: 6123263284

Fax: 6122933841

Bioworld technology, co. Ltd.

Add: No 9, weidi road Qixia District Nanjing, 210046, P. R. China.

Email: info@biogot.com

Tel: 0086-025-68037686

Fax: 0086-025-68035151