

## MAP1LC3B (D23) polyclonal antibody

Catalog: AP0762

Host: Rabbit

Reactivity: Human, Mouse, Rat

### BackGround:

MAP1LC3B, a homolog of Apg8p, is essential for autophagy and associated to the autophagosome membranes after processing. Two forms of LC3 $\beta$ , the cytosolic LC3-I and the membrane-bound LC3-II, are produced post-translationally. LC3-I is formed by the removal of the C-terminal 22 amino acids from newly synthesized LC3 $\beta$ , followed by the conversion of a fraction of LC3-I into LC3-II. LC3 enhances fibronectin mRNA translation in ductus arteriosus cells through association with 60S ribosomes and binding to an AU-rich element in the 3' untranslated region of fibronectin mRNA. This facilitates sorting of fibronectin mRNA onto rough endoplasmic reticulum and translation. MAP LC3 $\beta$  may also be involved in formation of autophagosomal vacuoles. It is expressed primarily in heart, testis, brain and skeletal muscle.

### Product:

Rabbit IgG, 1mg/ml in PBS with 0.02% sodium azide, 50% glycerol, pH7.2

### Molecular Weight:

~ 16-18 kDa

### Swiss-Prot:

Q9GZQ8

### Purification&Purity:

The antibody was affinity-purified from rabbit antiserum by affinity-chromatography using epitope-specific immunogen and the purity is > 95% (by SDS-PAGE).

### Applications:

WB: 1:1000~1:2000

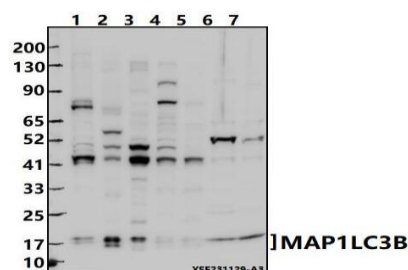
### Storage&Stability:

Store at 4 °C short term. Aliquot and store at -20 °C long term. Avoid freeze-thaw cycles.

### Specificity:

MAP1LC3B (D23) polyclonal antibody detects endogenous levels of LC3-I and LC3-II protein.

### DATA:



Western blot (WB) analysis of MAP1LC3B (D23) at 1:2000 dilution

Lane1:Hela whole cell lysate(30ug)

Lane2:U-87MG whole cell lysate(30ug)

Lane3:HepG2 whole cell lysate(30ug)

Lane4:3T3-L1 whole cell lysate(30ug)

Lane5:PC12 whole cell lysate(30ug)

Lane6:The Brain tissue lysate of Mouse(30ug)

Lane7:The Brain tissue lysate of Rat(30ug)

### Note:

For research use only, not for use in diagnostic procedure.

### Bioworld Technology, Inc.

Add: 1660 South Highway 100, Suite 500 St. Louis Park, MN 55416, USA.

Email: [info@bioworld.com](mailto:info@bioworld.com)

Tel: 6123263284

Fax: 6122933841

### Bioworld technology, co. Ltd.

Add: No 9, weidi road Qixia District Nanjing, 210046, P. R. China.

Email: [info@biogot.com](mailto:info@biogot.com)

Tel: 0086-025-68037686

Fax: 0086-025-68035151