

P21 (WQ1) polyclonal antibody

Catalog: AP0713

Host: Rabbit

Reactivity: Human

BackGround:

It is now well established that cyclins play a positive role in promoting cell cycle transitions via their ability to associate with and activate their cognate cyclin-dependent kinases (Cdks). Cdk2 associates with cyclins A, D and E, and has been implicated in the control of the G1 to S phase transition in mammals. A novel Cdk-interacting protein, designated p21, Cip1 or WAF1, has been identified in cyclin A, cyclin D1, cyclin E and Cdk2 immunoprecipitates. p21 is a potent, tight-binding inhibitor of Cdks and can inhibit the phosphorylation of Rb by cyclin A-Cdk 2, cyclin E-Cdk2, cyclin D1-Cdk4 and cyclin D2-Cdk4 complexes. Expression of p21 is inducible by wildtype, but not mutant, p53. The mouse homolog of p21 is designated CAP20.

Product:

1 mg/ml in Phosphate buffered saline (PBS) with 0.05% sodium azide, approx. pH 7.2.

Molecular Weight:

~ 21 kDa

Swiss-Prot:

P38936

Purification&Purity:

The antibody was affinity-purified from rabbit antiserum by affinity-chromatography using epitope-specific immunogen and the purity is > 95% (by SDS-PAGE).

Applications:

WB: 1:500~1:1000

IHC: 1:50~1:200

IF: 1:50~1:200

Storage&Stability:

Store at 4 °C short term. Aliquot and store at -20 °C long

term. Avoid freeze-thaw cycles.

Specificity:

P21 (WQ1) polyclonal antibody detects endogenous levels of P21 protein.

DATA:



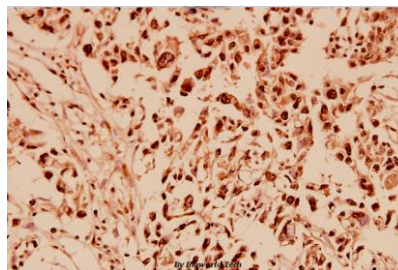
Western blot (WB) analysis of P21 (WQ1) pAb at 1:500 dilution

Lane1:A375 whole cell lysate(40ug)

Lane2:MCF-7 whole cell lysate(40ug)

Lane3:HeLa whole cell lysate(40ug)

Lane4:HCT116 whole cell lysate(40ug)



Immunohistochemistry (IHC) analyzes of P21 (WQ1) pAb in paraffin-embedded human breast carcinoma tissue at 1:100.

Note:

For research use only, not for use in diagnostic procedure.

Bioworld Technology, Inc.

Add: 1660 South Highway 100, Suite 500 St. Louis Park, MN 55416, USA.

Email: info@bioworld.com

Tel: 6123263284

Fax: 6122933841

Bioworld technology, co. Ltd.

Add: No 9, weidi road Qixia District Nanjing, 210046, P. R. China.

Email: info@biogot.com

Tel: 0086-025-68037686

Fax: 0086-025-68035151