

HDC polyclonal antibody

Catalog: AP0480

Host: Rabbit

Reactivity: Human, Mouse, Rat

BackGround:

Histamine is a multifunctional biogenic amine with relevant roles in intercellular communication, inflammatory processes and highly prevalent pathologies. Specifically, it plays a role in the central nervous, gastrointestinal, respiratory and immune systems. Histamine biogenesis relies on the rate-limiting enzyme histidine decarboxylase (HDC), which is regulated by posttranslational processing. Histamine is a multifunctional biogenic amine with relevant roles in intercellular communication, inflammatory processes and highly prevalent pathologies. Specifically, it plays a role in the central nervous, gastrointestinal, respiratory and immune systems. Histamine biogenesis relies on the rate-limiting enzyme histidine decarboxylase (HDC), which is regulated by posttranslational processing.

Product:

1 mg/ml in Phosphate buffered saline (PBS) with 15 mM sodium azide, approx. pH 7.2.

Molecular Weight:

~ 74 kDa

Swiss-Prot:

P19113

Purification&Purity:

The antibody was affinity-purified from rabbit antiserum by affinity-chromatography using epitope-specific immunogen and the purity is > 95% (by SDS-PAGE).

Applications:

WB: 1:500~1:1000

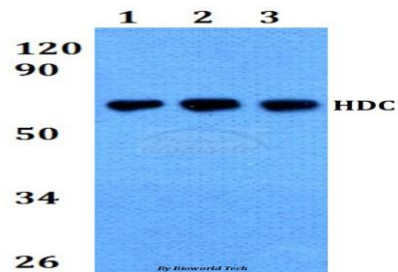
Storage&Stability:

Store at 4 °C short term. Aliquot and store at -20 °C long term. Avoid freeze-thaw cycles.

Specificity:

HDC polyclonal antibody detects endogenous levels of HDC protein.

DATA:



Western blot (WB) analysis of HDC polyclonal antibody at 1:500 dilution

Lane1:HEK293T whole cell lysate

Lane2:Raw264.7 whole cell lysate

Lane3:PC12 whole cell lysate

Note:

For research use only, not for use in diagnostic procedure.

Bioworld Technology, Inc.

Add: 1660 South Highway 100, Suite 500 St. Louis Park, MN 55416, USA.

Email: info@bioworld.com

Tel: 6123263284

Fax: 6122933841

Bioworld technology, co. Ltd.

Add: No 9, weidi road Qixia District Nanjing, 210046, P. R. China.

Email: info@biogot.com

Tel: 0086-025-68037686

Fax: 0086-025-68035151