

Smad2/3 (S2) polyclonal antibody

Catalog: AP0444

Host: Rabbit

Reactivity: Human,Rat,Mouse

BackGround:

Members of the Smad family of signal transduction molecules are components of a critical intracellular pathway that transmit TGF- β signals from the cell surface into the nucleus. Three distinct classes of Smads have been defined: the receptor-regulated Smads (R-Smads), which include Smad1, 2, 3, 5, and 8; the common-mediator Smad (co-Smad), Smad4; and the antagonistic or inhibitory Smads (I-Smads), Smad6 and 7. Activated type I receptors associate with specific R-Smads and phosphorylate them on a conserved carboxy-terminal SSXS motif. The phosphorylated R-Smad dissociates from the receptor and forms a heteromeric complex with the co-Smad (Smad4), allowing translocation of the complex to the nucleus. Once in the nucleus, Smads can target a variety of DNA binding proteins to regulate transcriptional responses.

Product:

Rabbit IgG, 1mg/ml in PBS with 0.02% sodium azide, 50% glycerol, pH7.2.

Molecular Weight:

~ 52, 55 kDa

Swiss-Prot:

P84022

Purification&Purity:

The antibody was affinity-purified from rabbit antiserum by affinity-chromatography using epitope-specific immunogen and the purity is > 95% (by SDS-PAGE).

Applications:

WB: 1:1000~1:2000

IF 1:50~1:200

Storage&Stability:

Store at 4 °C short term. Aliquot and store at -20 °C long term. Avoid freeze-thaw cycles.

Specificity:

Smad2/3 (S2) pAb detects endogenous levels of Smad2/3

protein.

DATA:



Western blot (WB) analysis of Smad2/3 (S2) pAb at 1:1000 dilution

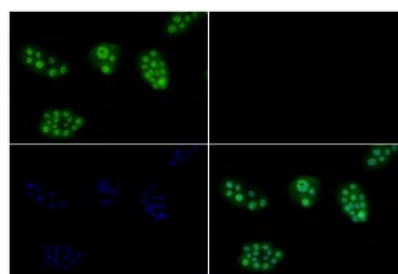
Lane1:PC12 whole cell lysate(30ug)

Lane2:CT-26 whole cell lysate(30ug)

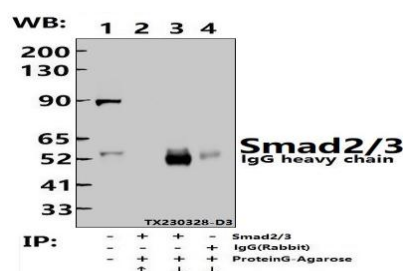
Lane3:HeLa whole cell lysate(30ug)

Lane4:HEK293T whole cell lysate(30ug)

Lane5:EC9706 whole cell lysate(30ug)



Immunofluorescence analysis of HeLa cells using Smad2/3 (S2) pAb at dilution of 1:200.



Immunoprecipitation of HEK293T cell lysates using Smad2/3 (S2) pAb (Sephacrose Bead Conjugate)#BD0048 (lane 2 and lane 3) and Nonspecific IgG Control (Sephacrose Bead Conjugate)#BD0048 (lane 4) .Lane 1 is 30% input. The western blot was probed using Smad2/3 (S2) pAb.

Note:

Bioworld Technology, Inc.

Add: 1660 South Highway 100, Suite 500 St. Louis Park, MN 55416,USA.

Email: info@bioworld.com

Tel: 6123263284

Fax: 6122933841

Bioworld technology, co. Ltd.

Add: No 9, weidi road Qixia District Nanjing, 210046, P. R. China.

Email: info@biogot.com

Tel: 0086-025-68037686

Fax: 0086-025-68035151



PRODUCT DATA SHEET

Bioworld Technology, Inc.

For research use only, not for use in diagnostic procedure.

Bioworld Technology, Inc.

Add: 1660 South Highway 100, Suite 500 St. Louis Park,
MN 55416, USA.

Email: info@bioworld.com

Tel: 6123263284

Fax: 6122933841

Bioworld technology, co. Ltd.

Add: No 9, weidi road Qixia District Nanjing, 210046,
P. R. China.

Email: info@biogot.com

Tel: 0086-025-68037686

Fax: 0086-025-68035151