

IKK γ (D25) polyclonal antibody

Catalog: AP0384

Host: Rabbit

Reactivity: Human, Mouse

BackGround:

The NF- κ B/Rel transcription factors are present in the cytosol in an inactive state, complexed with the inhibitory I κ B proteins. Most agents that activate NF- κ B do so through a common pathway based on phosphorylation-induced, proteasome-mediated degradation of I κ B. The key regulatory step in this pathway involves activation of a high molecular weight I κ B kinase (IKK) complex whose catalysis is generally carried out by three tightly associated IKK subunits. IKK α and IKK β serve as the catalytic subunits of the kinase and IKK γ serves as the regulatory subunit. Activation of IKK depends upon phosphorylation at Ser177 and Ser181 in the activation loop of IKK β (Ser176 and Ser180 in IKK α), which causes conformational changes, resulting in kinase activation. Activation of the NF- κ B pathway by the T-cell lymphotropic virus Tax protein or by TNF- α treatment leads to IKK β -dependent phosphorylation of human IKK γ , primarily at Ser376. In mice, mutation of the orthologous residue (Ser369) to alanine leads to enhanced IKK γ -mediated stimulation of IKK β kinase activity.

Product:

Rabbit IgG, 1mg/ml in PBS with 0.02% sodium azide, 50% glycerol, pH7.2.

Molecular Weight:

~ 49 kDa

Swiss-Prot:

Q9Y6K9

Purification&Purity:

The antibody was affinity-purified from rabbit antiserum by affinity-chromatography using epitope-specific immunogen and the purity is > 95% (by SDS-PAGE).

Applications:

WB: 1:500~1:1000

IF: 1:100~1:500

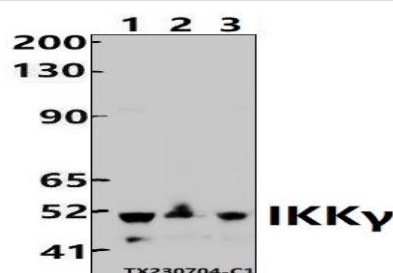
Storage&Stability:

Store at 4 °C short term. Aliquot and store at -20 °C long term. Avoid freeze-thaw cycles.

Specificity:

IKK γ (D25) polyclonal antibody detects endogenous levels of IKK γ protein.

DATA:

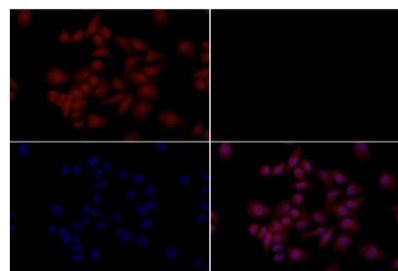


Western blot (WB) analysis of IKK γ (D25) polyclonal antibody at 1:500 dilution

Lane1:EC9706 whole cell lysate(30ug)

Lane2:HEK293T whole cell lysate(30ug)

Lane3:CT-26 whole cell lysate(30ug)



Immunofluorescence analysis of CT26 cells using IKK γ (D25) pAb at dilution of 1:200 (40x lens).

Note:

For research use only, not for use in diagnostic procedure.

Bioworld Technology, Inc.

Add: 1660 South Highway 100, Suite 500 St. Louis Park, MN 55416, USA.

Email: info@bioworld.com

Tel: 6123263284

Fax: 6122933841

Bioworld technology, co. Ltd.

Add: No 9, weidi road Qixia District Nanjing, 210046, P. R. China.

Email: info@biogot.com

Tel: 0086-025-68037686

Fax: 0086-025-68035151



PRODUCT DATA SHEET

Bioworld Biotech Co., Ltd

Bioworld Technology, Inc.

Add: 1660 South Highway 100, Suite 500 St. Louis Park,
MN 55416, USA.

Email: info@bioworld.com

Tel: 6123263284

Fax: 6122933841

Bioworld technology, co. Ltd.

Add: No 9, weidi road Qixia District Nanjing, 210046,
P. R. China.

Email: info@biogot.com

Tel: 0086-025-68037686

Fax: 0086-025-68035151