

Fyn (T524) polyclonal antibody

Catalog: AP0381

Host: Rabbit

Reactivity: Human, Mouse, Rat

Background:

Fyn is a membrane-associated, non-receptor protein tyrosine kinase approximately 59kDa, which belongs to the Src family of cytoplasmic tyrosine kinases. Fyn is very strongly similar to mouse Fyn, v-src and c-src. Fyn is expressed predominately in tissues of neuronal and hematopoietic origin. Neuronal Fyn and hematopoietic Fyn differ at the junction of the SH2 and kinase domains due to tissue specific alternative splicing. Fyn has been shown to be involved in B cell and T cell activation as well as keratinocyte differentiation. In T cells, Fyn associates with the T-cell antigen receptor and Thy1.

Product:

Rabbit IgG, 1mg/ml in PBS with 0.02% sodium azide, 50% glycerol, pH7.2

Molecular Weight:

~ 59 kDa

Swiss-Prot:

P06241

Purification&Purity:

The antibody was affinity-purified from rabbit antiserum by affinity-chromatography using epitope-specific immunogen and the purity is > 95% (by SDS-PAGE).

Applications:

WB:1:500~1:1000

IHC:1:50~1:200

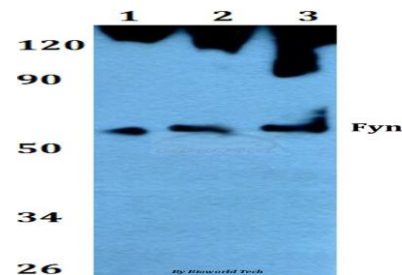
Storage&Stability:

Store at 4 °C short term. Aliquot and store at -20 °C long term. Avoid freeze-thaw cycles.

Specificity:

Fyn (T524) polyclonal antibody detects endogenous levels of Fyn protein.

DATA:

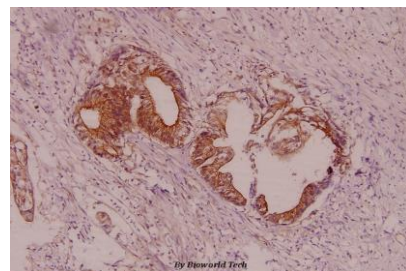


Western blot (WB) analysis of Fyn (T524) polyclonal antibody at 1:500 dilution

Lane1:Hela whole cell lysate

Lane2:NIH-3T3 whole cell lysate

Lane3:PC12 whole cell lysate



Immunohistochemistry (IHC) analyzes of Fyn (T524) pAb in paraffin-embedded human colorectal cancer carcinoma tissue at 1:100.

Note:

For research use only, not for use in diagnostic procedure.

Bioworld Technology, Inc.

Add: 1660 South Highway 100, Suite 500 St. Louis Park, MN 55416, USA.

Email: info@bioworld.com

Tel: 6123263284

Fax: 6122933841

Bioworld technology, co. Ltd.

Add: No 9, weidi road Qixia District Nanjing, 210046, P. R. China.

Email: info@biogot.com

Tel: 0086-025-68037686

Fax: 0086-025-68035151