

Smad3 (phospho-S213) polyclonal antibody

Catalog: AP0329

Host: Rabbit

Reactivity: Human, Mouse, Rat

BackGround:

Smad proteins, the mammalian homologs of the Drosophila mothers against decapentaplegic (Mad), have been implicated as downstream effectors of $\text{GF}\beta/\text{BMP}$ signaling. Smad1 (also designated Madr1 or JV4-1) and Smad5 are effectors of BMP-2 and BMP-4 function, while Smad2 (also designated Madr2 or JV18-1) and Smad3 are involved in $\text{TGF}\beta$ and activin-mediated growth modulation. Smad4 (also designated DPC4) has been shown to mediate all of the above activities through interaction with various Smad family members. Smad6 and Smad7 regulate the response to activin/ $\text{TGF}\beta$ signaling by interfering with $\text{TGF}\beta$ -mediated phosphorylation of other Smad proteins.

Product:

Rabbit IgG, 1mg/ml in PBS with 0.02% sodium azide, 50% glycerol, pH7.2

Molecular Weight:

~ 48, 55 kDa

Swiss-Prot:

P84022

Purification&Purity:

The antibody was affinity-purified from rabbit antiserum by affinity-chromatography using epitope-specific immunogen and the purity is > 95% (by SDS-PAGE).

Applications:

WB: 1:500~1:1000

IF: 1:100~1:500

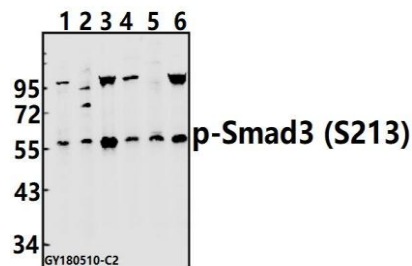
Storage&Stability:

Store at 4 °C short term. Aliquot and store at -20 °C long term. Avoid freeze-thaw cycles.

Specificity:

p-Smad3 (S213) polyclonal antibody detects endogenous levels of Smad3 protein only when phosphorylated at Ser213.

DATA:



Western blot (WB) analysis of p-Smad3 (S213) pAb at 1:500 dilution

Lane1:Hela whole cell lysate(40ug)

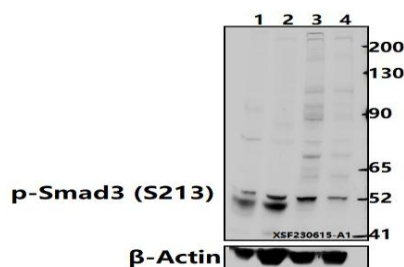
Lane2:HEK293T whole cell lysate(40ug)

Lane3:Panc1 whole cell lysate(20ug)

Lane4:LOVO whole cell lysate(40ug)

Lane5:C6 whole cell lysate(40ug)

Lane6:AML-12 whole cell lysate(40ug)



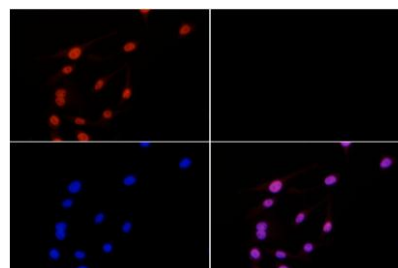
Western blot (WB) analysis of Smad3 (Phospho-S213) pAb at 1:500 dilution

Lane1:AML-12 whole cell lysate(30ug)

Lane2:PMVEC whole cell lysate(30ug)

Lane3:HepG2 treated with $\text{TGF}\beta$ (100 ng/ml, 30 minutes) whole cell lysate(30ug)

Lane4:HepG2 whole cell lysate(30ug)



Bioworld Technology, Inc.

Add: 1660 South Highway 100, Suite 500 St. Louis Park, MN 55416, USA.

Email: info@bioworld.com

Tel: 6123263284

Fax: 6122933841

Bioworld technology, co. Ltd.

Add: No 9, weidi road Qixia District Nanjing, 210046, P. R. China.

Email: info@biogot.com

Tel: 0086-025-68037686

Fax: 0086-025-68035151



PRODUCT DATA SHEET

Bioworld Technology, Inc.

Immunofluorescence analysis of HepG2 cells using Smad3 (phospho-S213) pAb at dilution of 1:200 (40x lens).

Note:

For research use only, not for use in diagnostic procedure.

Bioworld Technology, Inc.

Add: 1660 South Highway 100, Suite 500 St. Louis Park,
MN 55416, USA.

Email: info@bioworld.com

Tel: 6123263284

Fax: 6122933841

Bioworld technology, co. Ltd.

Add: No 9, weidi road Qixia District Nanjing, 210046,
P. R. China.

Email: info@biogot.com

Tel: 0086-025-68037686

Fax: 0086-025-68035151