

## PKC $\theta$ (phospho-T538) polyclonal antibody

Catalog: AP0292

Host: Rabbit

Reactivity: Human, Mouse, Rat

### BackGround:

Members of the protein kinase C (PKC) family of serine/threonine kinases play a key role in regulating the differentiation and growth of diverse cell types. PKC theta is a member of the PKC family, and its predominant expression in hematopoietic cells suggests that it may play a role in signal transduction and growth regulatory pathways unique to these cells. PKC theta is a Ca(2+)-independent PKC isoform that is selectively expressed in T lymphocytes (and muscle), and it is thought to play an important role in T cell receptor-induced activation. Among several PKC isoenzymes expressed in T cells, PKC theta is unique in being rapidly recruited to the site of TCR clustering. It has been shown that PKC theta is essential for TCR-mediated T-cell activation, but it is dispensable during TCR-dependent thymocyte development.

### Product:

Rabbit IgG, 1mg/ml in PBS with 0.02% sodium azide, 50% glycerol, pH7.2

### Molecular Weight:

~ 80 kDa

### Swiss-Prot:

Q04759

### Purification&Purity:

The antibody was affinity-purified from rabbit antiserum by affinity-chromatography using epitope-specific immunogen and the purity is > 95% (by SDS-PAGE).

### Applications:

WB:1:500~1:1000

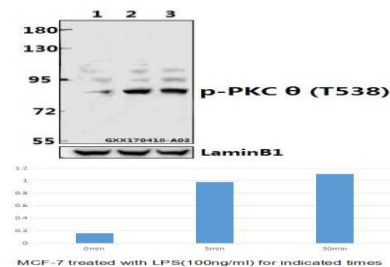
### Storage&Stability:

Store at 4 °C short term. Aliquot and store at -20 °C long term. Avoid freeze-thaw cycles.

### Specificity:

PKC  $\theta$  (phospho-T538) polyclonal antibody detects endogenous levels of PKC  $\theta$  protein only when phosphorylated at Thr538.

### DATA:



Western blot (WB) analysis of PKC  $\theta$  (phospho-T538) polyclonal antibody at 1:500 dilution

Lane1:MCF-7 whole cell lysate

Lane2:MCF-7 treated with LPS(100ng/ml) for 5 minutes whole cell lysate

Lane3:MCF-7 treated with LPS(100ng/ml) for 30 minutes whole cell lysate

### Note:

For research use only, not for use in diagnostic procedure.

### Bioworld Technology, Inc.

Add: 1660 South Highway 100, Suite 500 St. Louis Park, MN 55416, USA.

Email: [info@bioworld.com](mailto:info@bioworld.com)

Tel: 6123263284

Fax: 6122933841

### Bioworld technology, co. Ltd.

Add: No 9, weidi road Qixia District Nanjing, 210046, P. R. China.

Email: [info@biogot.com](mailto:info@biogot.com)

Tel: 0086-025-68037686

Fax: 0086-025-68035151