

MSK1 (phospho-S360) polyclonal antibody

Catalog: AP0286

Host: Rabbit

Reactivity: Human, Mouse, Rat

Background:

MSK-1 is a mitogen and stress activated protein kinase-1 which belongs to the AGC family of kinases and is related in structure to the ribosomal p70 S6 kinase subfamily. MSK-1 can be activated by ERK1/2 and SAPK2 /p38 MAP kinase. It is also known to be required for the phosphorylation of CREB, ATF1 H3 and HMG-14 in response to mitogen and stress. Similar to RSK, MSK-1 contains two kinase domains (N-term and a C-term). Once phosphorylated on Thr581 and Ser360 by ERK1/2 and SAPK2/p38, MSK-1 autophosphorylates on at least 5 sites. Of these autophosphorylation sites Ser212 and Ser376 get phosphorylated by the C-terminal kinase domain of MSK-1 which is essential for the catalytic activity of the N-terminal kinase domain.

Product:

Rabbit IgG, 1mg/ml in PBS with 0.02% sodium azide, 50% glycerol, pH7.2

Molecular Weight:

~ 90 kDa

Swiss-Prot:

O75582

Purification&Purity:

The antibody was affinity-purified from rabbit antiserum by affinity-chromatography using epitope-specific immunogen and the purity is > 95% (by SDS-PAGE).

Applications:

WB: 1:500~1:1000

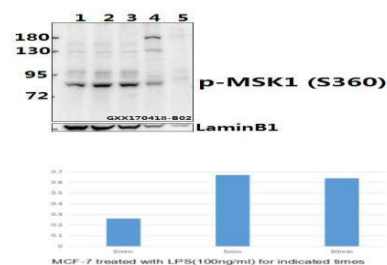
Storage&Stability:

Store at 4 °C short term. Aliquot and store at -20 °C long term. Avoid freeze-thaw cycles.

Specificity:

MSK1 (phospho-S360) polyclonal antibody detects endogenous levels of MSK1 only when phosphorylated at Ser360.

DATA:



Western blot (WB) analysis of p-MSK1 (S360) polyclonal antibody at 1:500 dilution

Lane1:MCF-7 whole cell lysate

Lane2:MCF-7 treated with LPS(100ng/ml) for 5 minutes whole cell lysate

Lane3:MCF-7 treated with LPS(100ng/ml) for 30 minutes whole cell lysate

Lane4:AML-12 whole cell lysate(40ug)

Lane5:H9C2 whole cell lysate(40ug)

Note:

For research use only, not for use in diagnostic procedure.

Bioworld Technology, Inc.

Add: 1660 South Highway 100, Suite 500 St. Louis Park, MN 55416, USA.

Email: info@bioworld.com

Tel: 6123263284

Fax: 6122933841

Bioworld technology, co. Ltd.

Add: No 9, weidi road Qixia District Nanjing, 210046, P. R. China.

Email: info@biogot.com

Tel: 0086-025-68037686

Fax: 0086-025-68035151