

eIF4B (phospho-Ser422) polyclonal antibody

Catalog: AP0084

Host: Rabbit

Reactivity: Human, Mouse, Rat

BackGround:

Required for the binding of mRNA to ribosomes. Functions in close association with EIF4-F and EIF4-A. Binds near the 5'-terminal cap of mRNA in presence of EIF4-F and ATP. Promotes the ATPase activity and the ATP-dependent RNA unwinding activity of both EIF4-A and EIF4-F. It is phosphorylated at Ser-422 by RPS6KA1 and RPS6KB1. Phosphorylation enhances the affinity of EIF4B for the EIF3 complex.

Product:

Rabbit IgG, 1mg/ml in PBS with 0.02% sodium azide, 50% glycerol, pH7.2

Molecular Weight:

~ 80 kDa

Swiss-Prot:

P23588

Purification&Purity:

The antibody was affinity-purified from rabbit antiserum by affinity-chromatography using epitope-specific immunogen and the purity is > 95% (by SDS-PAGE).

Applications:

WB: 1:500~1:1000

Storage&Stability:

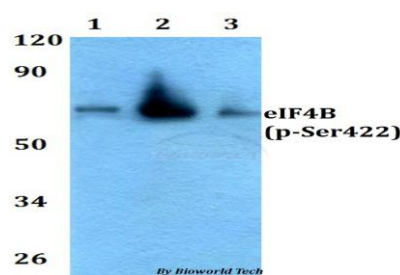
Store at 4 °C short term. Aliquot and store at -20 °C long

term. Avoid freeze-thaw cycles.

Specificity:

p-eIF4B(Ser422) polyclonal antibody detects endogenous levels of eIF4B protein only when phosphorylated at Ser422.

DATA:



Western blot (WB) analysis of p-eIF4B (Ser422) polyclonal antibody at 1:500 dilution

Lane1: HEK293T whole cell lysate

Lane2: Raw264.7 whole cell lysate

Lane3: PC12 whole cell lysate

Note:

For research use only, not for use in diagnostic procedure.

Bioworld Technology, Inc.

Add: 1660 South Highway 100, Suite 500 St. Louis Park, MN 55416, USA.

Email: info@bioworld.com

Tel: 6123263284

Fax: 6122933841

Bioworld technology, co. Ltd.

Add: No 9, weidi road Qixia District Nanjing, 210046, P. R. China.

Email: info@biogot.com

Tel: 0086-025-68037686

Fax: 0086-025-68035151