

Integrin $\alpha 5$ (CD49e) polyclonal antibody

Catalog: NCP0244P

Host: Rabbit

Reactivity: Human, Mouse

BackGround:

Integrins are α/β heterodimeric cell surface receptors that play a pivotal role in cell adhesion and migration, as well as in growth and survival. The integrin family contains at least 18 α and 8 β subunits that form 24 known integrins with distinct tissue distribution and overlapping ligand specificities. Integrins not only transmit signals to cells in response to the extracellular environment (outside-in signaling), but also sense intracellular cues to alter their interaction with the extracellular environment (inside-out signaling).

Integrin $\alpha 5/\beta 1$ is involved in multiple biological processes including embryonic development, angiogenesis and tumor metastasis. By interaction with its fibronectin ligand, $\alpha 5/\beta 1$ transduces signals that regulate cell adhesion, migration, matrix assembly and cytoskeletal organization.

Product:

Rabbit IgG, 1mg/ml in PBS with 0.02% sodium azide, 50% glycerol, pH7.2.

Molecular Weight:

~ 130 kDa

Swiss-Prot:

P08648

Purification&Purity:

The antibody was affinity-purified from rabbit antiserum by affinity-chromatography using epitope-specific immunogen and the purity is > 95% (by SDS-PAGE).

Applications:

WB: 1:2000~1:5000

IP: 1:50~1:200

Storage&Stability:

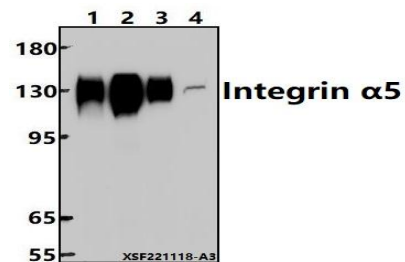
Store at 4 °C short term. Aliquot and store at -20 °C long term. Avoid freeze-thaw cycles.

Specificity:

Integrin $\alpha 5$ polyclonal antibody detects endogenous levels

of Integrin $\alpha 5$ protein.

DATA:



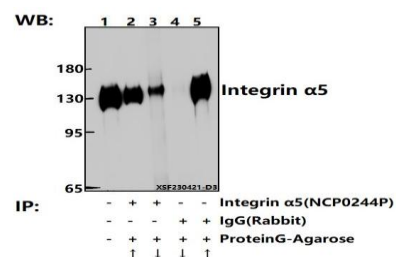
Western blot (WB) analysis of Integrin $\alpha 5$ polyclonal antibody at 1:2000 dilution

Lane1:A549 whole cell lysate(30ug)

Lane2:L02 cell membrane lysate(24ug)

Lane3:SGC7901 whole cell lysate(30ug)

Lane4:BV2 whole cell lysate(30ug)



Immunoprecipitation of A549 cell lysates using Integrin $\alpha 5$ pAb (Sepharose Bead Conjugate)#BD0048 (lane 2 and lane 3) and Nonspecific IgG Control (Sepharose Bead Conjugate)#BD0048 (lane 4 and lane 5). Lane 1 is 30% input. The western blot was probed using Integrin $\alpha 5$ pAb #NCP0244P.

Note:

For research use only, not for use in diagnostic procedure.

Bioworld Technology, Inc.

Add: 1660 South Highway 100, Suite 500 St. Louis Park, MN 55416, USA.

Email: info@bioworld.com

Tel: 6123263284

Fax: 6122933841

Bioworld technology, co. Ltd.

Add: No 9, weidi road Qixia District Nanjing, 210046, P. R. China.

Email: info@biogol.com

Tel: 0086-025-68037686

Fax: 0086-025-68035151