

CD22 Recombinant Protein

Catalog: NCP0191

Host: E.coli

Tag: His-tag

BackGround:

CD22 (also known as siglec-2) is a member of the sialic acid-binding immunoglobulin-type lectin (Siglec) family of immunomodulatory receptors. CD22 can bind to its ligand α 2,6-linked sialic acid on different cells (trans interaction) as well as on the same cells (cis interaction). CD22 is predominantly expressed on B cells and functions as an inhibitory co-receptor for the B cell receptor (BCR). After BCR ligation, the tyrosine kinase Lyn is activated and phosphorylates two distal of the four ITIM motifs in the intracellular carboxy-terminal region of CD22, which then recruit tyrosine phosphatases, including SHP-1, to the plasma membrane, and in turn, they get tyrosine-phosphorylated and activated to damp the signaling pathways initiated by BCR ligation. CD22 has been actively pursued as a therapeutic target for autoimmune diseases. Due to almost exclusive expression on B cells, it is also actively pursued as a therapeutic target for multiple B cell malignancies.

Product:

PBS, 4M Urea, PH7.4

Molecular Weight:

~74kDa

Swiss-Prot:

P20273

Purification&Purity:

Transferred into competent cells and the supernatant was purified by NI column affinity chromatography and the purity is > 85% (by SDS-PAGE).

Restriction Sites:

NdeI-XhoI

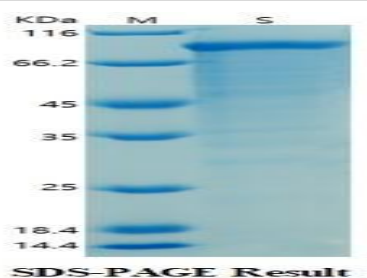
Storage&Stability:

Store at 4 °C short term. Aliquot and store at -20 °C long term. Avoid freeze-thaw cycles.

Expression Vector:

pet-22b(+)

DATA:



Note:

For research use only, not for use in diagnostic procedure.

Bioworld Technology, Inc.

Add: 1660 South Highway 100, Suite 500 St. Louis Park, MN 55416, USA.

Email: info@bioworld.com

Tel: 6123263284

Fax: 6122933841

Bioworld technology, co. Ltd.

Add: No 9, weidi road Qixia District Nanjing, 210046, P. R. China.

Email: info@biogot.com

Tel: 0086-025-68037686

Fax: 0086-025-68035151