

Caveolin-1 Mouse monoclonal antibody

Catalog: MB9028

Host: Mouse

Reactivity: Human, Mouse, Rat

BackGround:

Caveolin, an integral membrane protein, is a principal component of caveolae membranes in vivo. Two isoforms of caveolin have been identified: a slower migrating 24-kDa species (-isoform) and a faster migrating 21-kDa species (-isoform). Caveolins interact with multiple signaling molecules, such as the G-protein alpha subunit, tyrosine kinase receptors, PKCs, Src family tyrosine kinases and eNOS. Caveolin-1 has been implicated in the pathogenesis of mammary epithelial cell hyperplasia.

Product:

Mouse IgG1, 1mg/ml in PBS with 0.02% sodium azide, 50% glycerol, pH7.2

Molecular Weight:

~ 20 kDa

Swiss-Prot:

Q03135

Purification&Purity:

Protein A affinity purified

Applications:

WB: 1:500

IHC/ICC: 1:100-1:200

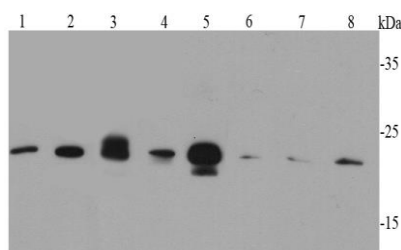
Storage&Stability:

Store at 4 °C short term. Aliquot and store at -20 °C long term. Avoid freeze-thaw cycles.

Specificity:

This antibody detects endogenous levels of Caveolin-1 and does not cross-react with related proteins.

DATA:



Western blot (WB) analysis of Caveolin-1 Mouse mAb at 1:500 dilution

Lane1:F9 whole cell lysate

Lane2:A549 whole cell lysate

Lane3:The lung tissue lysate of Mouse

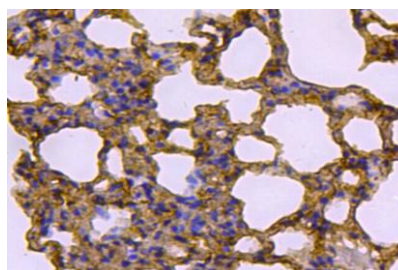
Lane4:The liver tissue lysate of Mouse

Lane5:The lung tissue lysate of Human

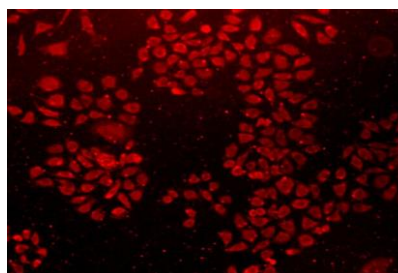
Lane6:Hela whole cell lysate

Lane7:HepG2 whole cell lysate

Lane8:Jurkat whole cell lysate



Immunohistochemical analysis of paraffin-embedded rat lung tissue using anti-Caveolin-1 antibody. Counter stained with hematoxylin.



ICC staining Caveolin-1 in L929 cells (red). Cells were fixed in paraformaldehyde, permeabilised with 0.25% Triton *100/PBS.

Note:

Bioworld Technology, Inc.

Add: 1660 South Highway 100, Suite 500 St. Louis Park, MN 55416, USA.

Email: info@bioworld.com

Tel: 6123263284

Fax: 6122933841

Bioworld technology, co. Ltd.

Add: No 9, weidi road Qixia District Nanjing, 210046, P. R. China.

Email: info@biogot.com

Tel: 0086-025-68037686

Fax: 0086-025-68035151



PRODUCT DATA SHEET

Bioworld Technology, Inc.

For research use only, not for use in diagnostic procedure.

Bioworld Technology, Inc.

Add: 1660 South Highway 100, Suite 500 St. Louis Park,
MN 55416, USA.

Email: info@bioworld.com

Tel: 6123263284

Fax: 6122933841

Bioworld technology, co. Ltd.

Add: No 9, weidi road Qixia District Nanjing, 210046,
P. R. China.

Email: info@biogot.com

Tel: 0086-025-68037686

Fax: 0086-025-68035151