

## p38 Mouse monoclonal antibody

Catalog: MB9023

Host: Mouse

Reactivity: Human, mouse

### BackGround:

MAP (mitogen-activated protein) kinases play a significant role in many biological processes, including cell adhesion and spreading, cell differentiation and apoptosis. p38 $\alpha$ , p38 $\beta$  and p38 $\gamma$ , also known as MAPK14, MAPK11 and MAPK12, respectively, each contain one protein kinase domain and belong to the MAP kinase family. Expressed in different areas throughout the body with common expression patterns in heart, p38 proteins use magnesium as a cofactor to catalyze the ATP-dependent phosphorylation of target proteins. Via their catalytic activity, p38 $\alpha$ , p38 $\beta$  and p38 $\gamma$  are involved in a variety of events throughout the cell, including signal transduction pathways, cytokine production and cell proliferation and differentiation.

### Product:

Mouse IgG2a, 1mg/ml in PBS with 0.02% sodium azide, 50% glycerol, pH7.2

### Molecular Weight:

~ 42 kDa

### Swiss-Prot:

Q16539

### Purification&Purity:

Protein G affinity purified

### Applications:

WB: 1:5000

ICC: 1:100-1:200

IHC: 1:100-1:200

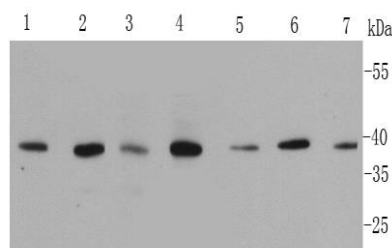
### Storage&Stability:

Store at 4 °C short term. Aliquot and store at -20 °C long term. Avoid freeze-thaw cycles.

### Specificity:

This antibody detects endogenous levels of p38 and does not cross-react with related proteins.

### DATA:



Western blot (WB) analysis of p38 Mouse mAb at 1:5000 dilution

Lane1:A431 whole cell lysate

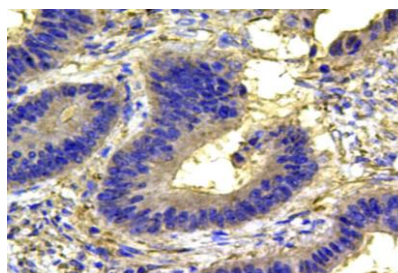
Lane2:HepG2 whole cell lysate

Lane3:Hela whole cell lysate

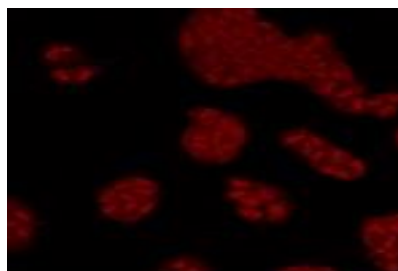
Lane3:NIH/3T3 whole cell lysate

Lane3:Jurkat whole cell lysate

Lane3:293T whole cell lysate



Immunohistochemical analysis of paraffin-embedded human colon carcinoma tissue using anti-p38 antibody. Counter stained with hematoxylin.



ICC staining of p38 in Hela cells (red). Cells were fixed in paraformaldehyde, permeabilised with 0.25% Triton \*100/PBS.

### Note:

For research use only, not for use in diagnostic procedure.

### Bioworld Technology, Inc.

Add: 1660 South Highway 100, Suite 500 St. Louis Park, MN 55416, USA.

Email: [info@bioworld.com](mailto:info@bioworld.com)

Tel: 6123263284

Fax: 6122933841

### Bioworld technology, co. Ltd.

Add: No 9, weidi road Qixia District Nanjing, 210046, P. R. China.

Email: [info@biogot.com](mailto:info@biogot.com)

Tel: 0086-025-68037686

Fax: 0086-025-68035151