

CD86(7H3) monoclonal antibody

Catalog: MB8608

Host: Mouse

Reactivity: Human, Mouse, Rat

BackGround:

T cell proliferation and lymphokine production are triggered by occupation of the TCR by antigen, followed by a costimulatory signal that is delivered by a ligand expressed on antigen presenting cells. The B7-related cell surface proteins B7-1 (CD80) and B7-2 (CD86) expressed on antigen presenting cells bind the homologous T cell receptors CD28 and CTLA-4 (cytotoxic T lymphocyte-associated protein-4) and trigger costimulatory signals for optimal T cell activation. CTLA-4 shares 31% overall amino acid identity with CD28, and it has been proposed that CD28 and CTLA-4 are functionally redundant. SLAM is a novel receptor on T cells that, when engaged, potentiates T cell expansion in a CD28-independent manner. B7, also designated BB1, is another ligand or counterreceptor for CD28 and CTLA-4 that is expressed on the antigen-presenting cell.

Product:

1mg/ml in PBS with 0.02% sodium azide, 50% glycerol, pH7.2

Molecular Weight:

~ 70 kDa

Swiss-Prot:

P42081

Purification&Purity:

The antibody was affinity-purified from mouse antiserum

by affinity-chromatography using epitope-specific immunogen and the purity is > 95% (by SDS-PAGE).

Applications:

WB: 1:5000~1:2000

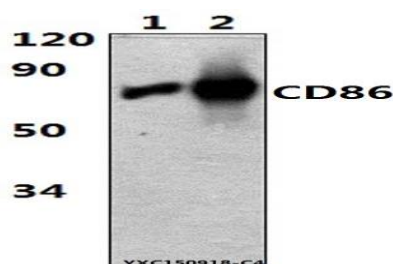
Storage&Stability:

Store at 4 °C short term. Aliquot and store at -20 °C long term. Avoid freeze-thaw cycles.

Specificity:

CD86(7H3) monoclonal antibody detects endogenous levels of CD86 protein.

DATA:



Western blot (WB) analysis of CD86(7H3) mAb at 1:2000 dilution

Lane1: The Spleen tissue lysate of Rat(15µg)

Lane2: The Spleen tissue lysate of Mouse(15µg)

Note:

For research use only, not for use in diagnostic procedure.

Bioworld Technology, Inc.

Add: 1660 South Highway 100, Suite 500 St. Louis Park, MN 55416, USA.

Email: info@bioworld.com

Tel: 6123263284

Fax: 6122933841

Bioworld technology, co. Ltd.

Add: No 9, weidi road Qixia District Nanjing, 210046, P. R. China.

Email: info@biogot.com

Tel: 0086-025-68037686

Fax: 0086-025-68035151