

## PE mouse anti-human CD3 monoclonal antibody

Catalog: MB8501P

Host: Mouse

Reactivity: Human

### BackGround:

In immunology, the CD3 (cluster of differentiation 3) T-cell co-receptor helps to activate the cytotoxic T-Cell. It consists of a protein complex and is composed of four distinct chains. In mammals, the complex contains a CD3 $\gamma$  chain, a CD3 $\delta$  chain, and two CD3 $\epsilon$  chains. These chains associate with a molecule known as the T-cell receptor (TCR) and the  $\zeta$ -chain (zeta-chain) to generate an activation signal in T lymphocytes. The TCR,  $\zeta$ -chain, and CD3 molecules together constitute the TCR complex.

### Product:

Mouse IgG1, 1mg/ml in PBS with 0.02% sodium azide, 50% glycerol, pH7.2

### Molecular Weight:

N/A

### Swiss-Prot:

P07766

### Purification&Purity:

Protein A affinity purified

### Applications:

FC:5ul per test

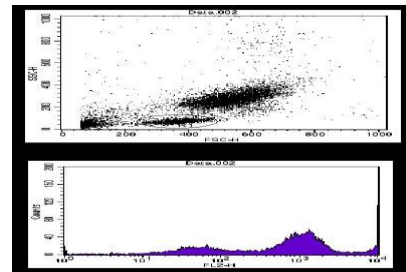
### Storage&Stability:

Store at 4 °C . Avoid freeze.

### Specificity:

This antibody detects Extracellular domain of human CD3.

### DATA:



Flow cytometry analysis of human monocytes.

### Note:

For research use only, not for use in diagnostic procedure.

### Bioworld Technology, Inc.

Add: 1660 South Highway 100, Suite 500 St. Louis Park,  
MN 55416, USA.

Email: [info@bioworld.com](mailto:info@bioworld.com)

Tel: 6123263284

Fax: 6122933841

### Bioworld technology, co. Ltd.

Add: No 9, weidi road Qixia District Nanjing, 210046,  
P. R. China.

Email: [info@biogot.com](mailto:info@biogot.com)

Tel: 0086-025-68037686

Fax: 0086-025-68035151