

## APC mouse anti-human CD3 monoclonal antibody

Catalog: MB8501A

Host: Mouse

Reactivity: Human

**BackGround:**

The CD3 (cluster of differentiation 3) T-cell co-receptor helps to activate the cytotoxic T-Cell. It consists of a protein complex and is composed of four distinct chains. In mammals, the complex contains a CD3 $\gamma$  chain, a CD3 $\delta$  chain, and two CD3 $\epsilon$  chains. These chains associate with a molecule known as the T-cell receptor (TCR) and the  $\zeta$ -chain (zeta-chain) to generate an activation signal in T lymphocytes. The TCR,  $\zeta$ -chain, and CD3 molecules together constitute the TCR complex.

**Product:**

Mouse IgG1, 1mg/ml in PBS with 0.02% sodium azide, 50% glycerol, pH7.2

**Molecular Weight:**

N/A

**Swiss-Prot:**

P07766

**Purification&Purity:**

Protein A affinity purified

**Applications:**

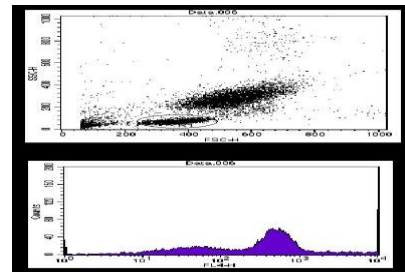
FC:5ul per test

**Storage&Stability:**

Store at 4 °C . Avoid frozen.

**Specificity:**

This antibody detects Extracellular domain of human CD3.

**DATA:**

Flow cytometry analysis of human monocytes.

**Note:**

For research use only, not for use in diagnostic procedure.

**Bioworld Technology, Inc.**

Add: 1660 South Highway 100, Suite 500 St. Louis Park,  
MN 55416, USA.

Email: [info@bioworld.com](mailto:info@bioworld.com)

Tel: 6123263284

Fax: 6122933841

**Bioworld technology, co. Ltd.**

Add: No 9, weidi road Qixia District Nanjing, 210046,  
P. R. China.

Email: [info@biogot.com](mailto:info@biogot.com)

Tel: 0086-025-68037686

Fax: 0086-025-68035151