

CD11B (L1) monoclonal antibody

Catalog: MB8001

Host: Mouse

Reactivity: Human, Mouse, Rat

BackGround:

Integrin α M, also designated complement component receptor-3 α , CD11b (p170), macrophage antigen a polypeptide, cell surface glycoprotein Mac-1 a subunit, MAC1A, MO1A and ITGAM) is a cell adhesion molecule that acts as a receptor for cell surface ligands such as intracellular adhesion molecules (ICAMs) or soluble ligands. Integrins are heterodimeric proteins that contain an a chain and b chain. Integrin α M combines with the Integrin β 2 to form a leukocyte-specific integrin referred to as macrophage receptor 1 (Mac-1), or inactivated-C3b (iC3b) receptor 3 (CR3). Integrin α M/ β 2 is important in the adherence of neutrophils and monocytes to stimulated endothelium, and also in the phagocytosis of complement coated particles.

Product:

1mg/ml in PBS with 0.02% sodium azide, 50% glycerol, pH7.2

Molecular Weight:

~ 170 kDa

Swiss-Prot:

P11215

Purification&Purity:

The antibody was affinity-purified from mouse ascites by affinity-chromatography using epitope-specific immunogen and the purity is > 95% (by SDS-PAGE).

Applications:

WB: 1:500~1:1000

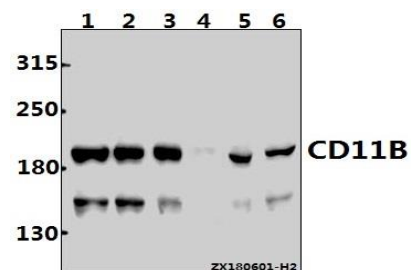
Storage&Stability:

Store at 4 °C short term. Aliquot and store at -20 °C long term. Avoid freeze-thaw cycles.

Specificity:

CD11B (L1) mAb detects endogenous levels of CD11B protein.

DATA:



Western blot (WB) analysis of CD11B (L1) mAb at 1:500 dilution

Lane1: Myla2059 whole cell lysate(30ug)

Lane2: HuT78 whole cell lysate(30ug)

Lane3: K562 whole cell lysate(30ug)

Lane4: The Spleen tissue lysate of Rat(40ug)

Lane5: RAW264.7 whole cell lysate(40ug)

Lane6: THP-1 whole cell lysate(40ug)

Note:

For research use only, not for use in diagnostic procedure.

Bioworld Technology, Inc.

Add: 1660 South Highway 100, Suite 500 St. Louis Park, MN 55416, USA.

Email: info@bioworld.com

Tel: 6123263284

Fax: 6122933841

Bioworld technology, co. Ltd.

Add: No 9, weidi road Qixia District Nanjing, 210046, P. R. China.

Email: info@biogot.com

Tel: 0086-025-68037686

Fax: 0086-025-68035151