

MCM2 mouse monoclonal antibody

Catalog: MB67305

Host: Mouse

Reactivity: Human

BackGround:

The protein encoded by this gene is one of the highly conserved mini-chromosome maintenance proteins (MCM) that are involved in the initiation of eukaryotic genome replication. The hexameric protein complex formed by MCM proteins is a key component of the pre-replication complex (pre_RC) and may be involved in the formation of replication forks and in the recruitment of other DNA replication related proteins. This protein forms a complex with MCM4, 6, and 7, and has been shown to regulate the helicase activity of the complex. This protein is phosphorylated, and thus regulated by, protein kinases CDC2 and CDC7. Multiple alternatively spliced transcript variants have been found, but the full-length nature of some variants has not been defined.

Product:

PBS (pH 7.3) containing 1% BSA, 50% glycerol and 0.02% sodium azide.

Molecular Weight:

~ 120 kDa

Swiss-Prot:

OTI8A11

Purification&Purity:

Purified from mouse ascites fluids or tissue culture supernatant by affinity chromatography (protein A/G)

Applications:

WB 1:500, IHC 1:150

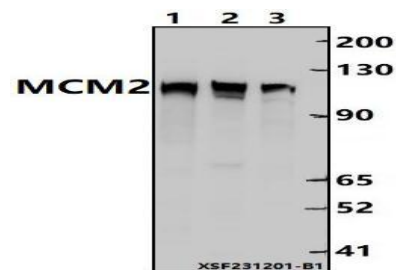
Storage&Stability:

Store at 4 °C short term. Aliquot and store at -20 °C long term. Avoid freeze-thaw cycles.

Specificity:

MCM2 mouse monoclonal antibody detects endogenous levels of MCM2 protein.

DATA:



Western blot (WB) analysis of MCM2 mouse monoclonal antibody at 1:500 dilution

Lane1:HCT116 whole cell lysate(30ug)

Lane2:EC9706 whole cell lysate(30ug)

Lane3:SHSY5Y whole cell lysate(30ug)

Note:

For research use only, not for use in diagnostic procedure.

Bioworld Technology, Inc.

Add: 1660 South Highway 100, Suite 500 St. Louis Park, MN 55416, USA.

Email: info@bioworld.com

Tel: 6123263284

Fax: 6122933841

Bioworld technology, co. Ltd.

Add: No 9, weidi road Qixia District Nanjing, 210046, P. R. China.

Email: info@biogot.com

Tel: 0086-025-68037686

Fax: 0086-025-68035151