

TCF7L2 Rabbit monoclonal antibody

Catalog: MB66390

Host: Rabbit

Reactivity: Human

BackGround:

LEF1 and TCF are members of the high mobility group (HMG) DNA-binding protein family of transcription factors that consists of the following: Lymphoid Enhancer Factor 1 (LEF1), T Cell Factor 1 (TCF1/TCF7), TCF3/TCF7L1, and TCF4/TCF7L2. LEF1 and TCF1/TCF7 were originally identified as important factors that regulate early lymphoid development and act downstream in Wnt signaling. LEF1 and TCF bind to Wnt response elements to provide docking sites for β -catenin, which translocates to the nucleus to promote the transcription of target genes upon activation of Wnt signaling. LEF1 and TCF are dynamically expressed during development and aberrant activation of the Wnt signaling pathway is involved in many types of cancers, including colon cancer. TCF4/TCF7L2 is expressed widely during development. Gene targeting studies indicate that TCF4/TCF7L2 is required to maintain the crypt stem cells of the small intestine. TCF4/TCF7L2 has several splicing isoforms that are expressed differentially in tissues and during cancer progression. Studies also indicate that a variant of the TCF4/TCF7L2 gene confers an increased risk of type 2 diabetes.

Product:

Liquid in 50mM Tris-Glycine (pH 7.4), 0.15M NaCl, 50% Glycerol, 0.01% Sodium azide and 0.05% BSA.

Molecular Weight:

~ 58 kDa

Swiss-Prot:

Q9NQB0

Purification&Purity:

The antibody was purified by immunogen affinity chromatography.

Applications:

WB (1/500 - 1/1000), IHC (1/50 - 1/100), IP (1/10 - 1/50)

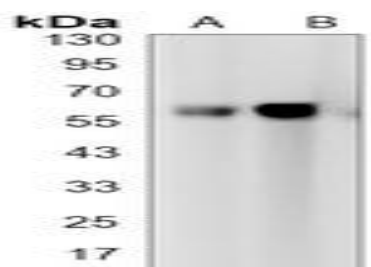
Storage&Stability:

Store at 4 °C short term. Aliquot and store at -20 °C long term. Avoid freeze-thaw cycles.

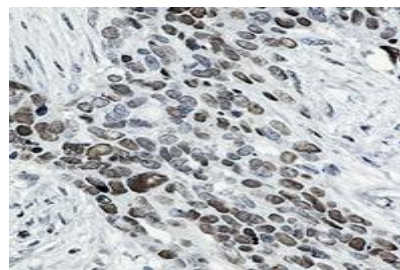
Specificity:

Recognizes endogenous levels of TCF7L2 protein.

DATA:



Western blot analysis of TCF7L2 expression in K562 (A), HeLa (B) whole cell lysates.



Immunohistochemical analysis of TCF7L2 staining in human cholangiocarcinoma formalin fixed paraffin embedded tissue section. The section was pre-treated using heat mediated antigen retrieval with sodium citrate buffer (pH 6.45). The section was then incubated with the antibody at room temperature and detected using an HRP conjugated compact polymer system. DAB was used as the chromogen. The section was then counterstained with haematoxylin and mounted with DPX.

Note:

For research use only, not for use in diagnostic procedure.

Bioworld Technology, Inc.

Add: 1660 South Highway 100, Suite 500 St. Louis Park, MN 55416, USA.

Email: info@bioworld.com

Tel: 6123263284

Fax: 6122933841

Bioworld technology, co. Ltd.

Add: No 9, weidi road Qixia District Nanjing, 210046, P. R. China.

Email: info@biogot.com

Tel: 0086-025-68037686

Fax: 0086-025-68035151



PRODUCT DATA SHEET

Bioworld Technology, Inc.

Bioworld Technology, Inc.

Add: 1660 South Highway 100, Suite 500 St. Louis Park,
MN 55416, USA.

Email: info@bioworld.com

Tel: 6123263284

Fax: 6122933841

Bioworld technology, co. Ltd.

Add: No 9, weidi road Qixia District Nanjing, 210046,
P. R. China.

Email: info@biogot.com

Tel: 0086-025-68037686

Fax: 0086-025-68035151