

CD41a monoclonal antibody

Catalog: MB65783

Host: Mouse

Reactivity: Human

BackGround:

Integrins are α/β heterodimeric cell surface receptors that play a pivotal role in cell adhesion and migration, as well as in growth and survival. The integrin family contains at least 18 α and 8 β subunits that form 24 known integrins with distinct tissue distribution and overlapping ligand specificities. Integrins not only transmit signals to cells in response to the extracellular environment (outside-in signaling), but also sense intracellular cues to alter their interaction with the extracellular environment (inside-out signaling).

Integrin $\alpha 2b$ is a cell-surface adhesion molecule that undergoes proteolytic cleavage to yield disulfide-linked heavy and light chains, which together with glycoprotein IIIb, forms a major fibrinogen receptor in activated platelets. Mutations in the corresponding ITGA2B gene can result in Glanzmann thrombasthenia, a bleeding disorder characterized by lack of platelet aggregation.

Product:

Mouse IgG1. Liquid in PBS, pH 7.3, and 0.02% sodium azide.

Molecular Weight:

~ 113 kDa

Swiss-Prot:

P08514

Purification&Purity:

The monoclonal antibody was affinity-purified from mouse antiserum by affinity-chromatography using epitope-specific immunogen and the purity is > 95% (by SDS-PAGE).

Applications:

IF (1/50 - 1/200)

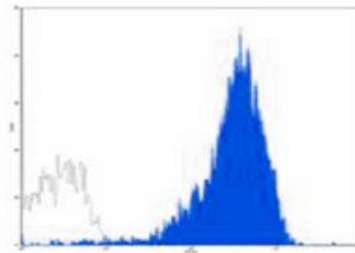
Storage&Stability:

Store at 4 °C short term. Aliquot and store at -20 °C long term. Avoid freeze-thaw cycles.

Specificity:

Recognizes human CD41

DATA:



Flow cytometric analysis of human platelet using Anti-CD41 Antibody, followed by anti-mouse IgG PE.

Note:

For research use only, not for use in diagnostic procedure.

Bioworld Technology, Inc.

Add: 1660 South Highway 100, Suite 500 St. Louis Park, MN 55416, USA.

Email: info@bioworld.com

Tel: 6123263284

Fax: 6122933841

Bioworld technology, co. Ltd.

Add: No 9, weidi road Qixia District Nanjing, 210046, P. R. China.

Email: info@biogot.com

Tel: 0086-025-68037686

Fax: 0086-025-68035151