

CD35 monoclonal antibody

Catalog: MB65777

Host: Mouse

Reactivity: Human

BackGround:

Complement receptor type 1 (CR1; CD35) is a type I transmembrane glycoprotein that is expressed on the surface of B cells, neutrophils, monocytes and renal podocytes. As a component of the host innate immune system, CR1/CD35 expressed on neutrophils and monocytes binds to ligands coated with the complement opsonins, C3b and C4b, which facilitates phagocytosis and production of proinflammatory cytokines. CR1/CD35 also participates in negative regulation of the complement cascade through its ability to promote dissociation of C3 and C5 convertases and by serving as one of multiple cofactors for Factor-I-mediated cleavage and inactivation of C3b and C4b.

Product:

Mouse IgG1. Liquid in PBS, pH 7.3, and 0.02% sodium azide.

Molecular Weight:

~ 223 kDa

Swiss-Prot:

P17927

Purification&Purity:

The monoclonal antibody was affinity-purified from mouse antiserum by affinity-chromatography using

epitope-specific immunogen and the purity is > 95% (by SDS-PAGE).

Applications:

IF (1/50 - 1/200)

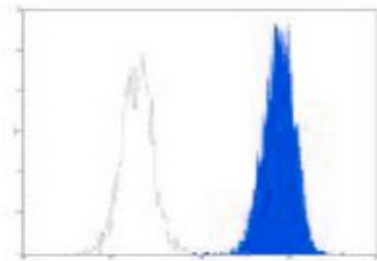
Storage&Stability:

Store at 4 °C short term. Aliquot and store at -20 °C long term. Avoid freeze-thaw cycles.

Specificity:

Recognizes human CD35

DATA:



Flow cytometric analysis of human peripheral blood granulocytes using Anti-CD35 Antibody, followed by anti-mouse IgG PE.

Note:

For research use only, not for use in diagnostic procedure.

Bioworld Technology, Inc.

Add: 1660 South Highway 100, Suite 500 St. Louis Park, MN 55416, USA.

Email: info@bioworld.com

Tel: 6123263284

Fax: 6122933841

Bioworld technology, co. Ltd.

Add: No 9, weidi road Qixia District Nanjing, 210046, P. R. China.

Email: info@biogot.com

Tel: 0086-025-68037686

Fax: 0086-025-68035151