

CD15 monoclonal antibody

Catalog: MB65754

Host: Mouse

Reactivity: Human

BackGround:

SSEA1 antibody detects a lactoseries oligosaccharide antigen that is expressed on the surface of mouse embryonal carcinoma and embryonic stem cells. This antigen is also found on early mouse embryos and both mouse and human germ cells, but is absent on human embryonic stem and carcinoma cells. Expression of SSEA1 in these human cell types increases upon differentiation, while on the mouse cell types differentiation leads to decreased expression.

Product:

Mouse IgG1. Liquid in PBS, pH 7.3, and 0.02% sodium azide.

Molecular Weight:

~ 59 kDa

Swiss-Prot:

P22083

Purification&Purity:

The monoclonal antibody was affinity-purified from mouse antiserum by affinity-chromatography using epitope-specific immunogen and the purity is > 95% (by SDS-PAGE).

Applications:

IF (1/50 - 1/200)

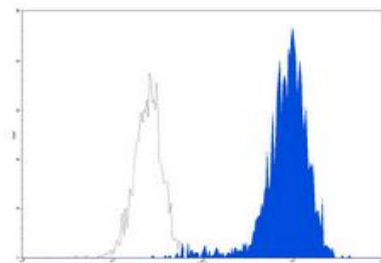
Storage&Stability:

Store at 4 °C short term. Aliquot and store at -20 °C long term. Avoid freeze-thaw cycles.

Specificity:

Recognizes human CD15

DATA:



Flow cytometric analysis of human peripheral blood granulocytes using Anti-CD15 Antibody, followed by anti-mouse IgG PE.

Note:

For research use only, not for use in diagnostic procedure.

Bioworld Technology, Inc.

Add: 1660 South Highway 100, Suite 500 St. Louis Park, MN 55416, USA.

Email: info@bioworld.com

Tel: 6123263284

Fax: 6122933841

Bioworld technology, co. Ltd.

Add: No 9, weidi road Qixia District Nanjing, 210046, P. R. China.

Email: info@biogot.com

Tel: 0086-025-68037686

Fax: 0086-025-68035151