

## MAPT monoclonal antibody

Catalog: MB63924

Host: Mouse

Reactivity: Human, Mouse, Rat

### BackGround:

This gene encodes the microtubule-associated protein tau (MAPT) whose transcript undergoes complex, regulated alternative splicing, giving rise to several mRNA species. MAPT transcripts are differentially expressed in the nervous system, depending on stage of neuronal maturation and neuron type. MAPT gene mutations have been associated with several neurodegenerative disorders such as Alzheimer's disease, Pick's disease, frontotemporal dementia, cortico-basal degeneration and progressive supranuclear palsy. [provided by RefSeq, Jul 2008]

### Product:

PBS (PH 7.3) containing 1% BSA, 50% glycerol and 0.02% sodium azide.

### Molecular Weight:

78.7 kDa(Predicted)

### Swiss-Prot:

A0A024R9Y1

### Purification&Purity:

Purified from mouse ascites fluids or tissue culture supernatant by affinity chromatography (protein A/G)

### Applications:

WB 1:2000, IHC 1:500

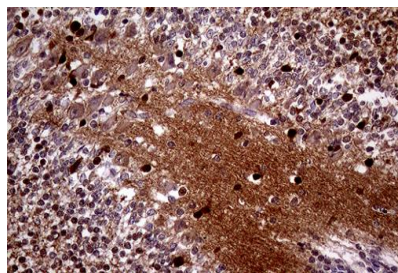
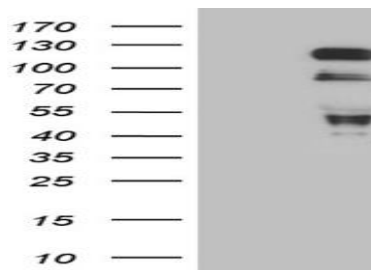
### Storage&Stability:

PBS (PH 7.3) containing 1% BSA, 50% glycerol and 0.02% sodium azide.

### Specificity:

microtubule associated protein tau

### DATA:



Immunohistochemical staining of paraffin-embedded Human embryonic cerebellum within the normal limits using anti-MAPT mouse monoclonal antibody. (Heat-induced epitope retrieval by 1mM EDTA in 10mM Tris buffer (pH8.5) at 120°C for 3min, TA809144) (1:500)

### Note:

For research use only, not for use in diagnostic procedure.

### Bioworld Technology, Inc.

Add: 1660 South Highway 100, Suite 500 St. Louis Park, MN 55416, USA.

Email: [info@bioworld.com](mailto:info@bioworld.com)

Tel: 6123263284

Fax: 6122933841

### Bioworld technology, co. Ltd.

Add: No 9, weidi road Qixia District Nanjing, 210046, P. R. China.

Email: [info@biogot.com](mailto:info@biogot.com)

Tel: 0086-025-68037686

Fax: 0086-025-68035151